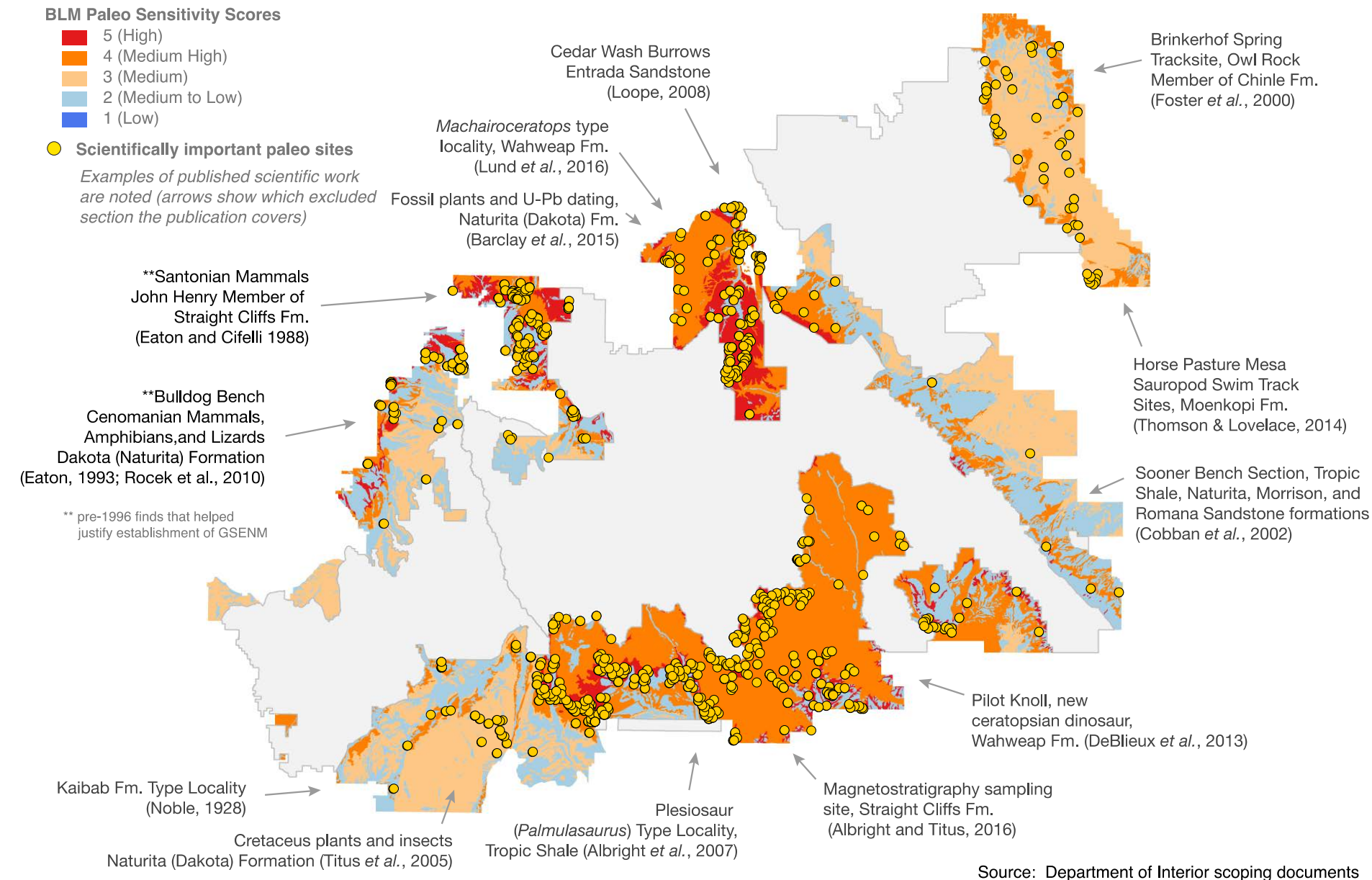
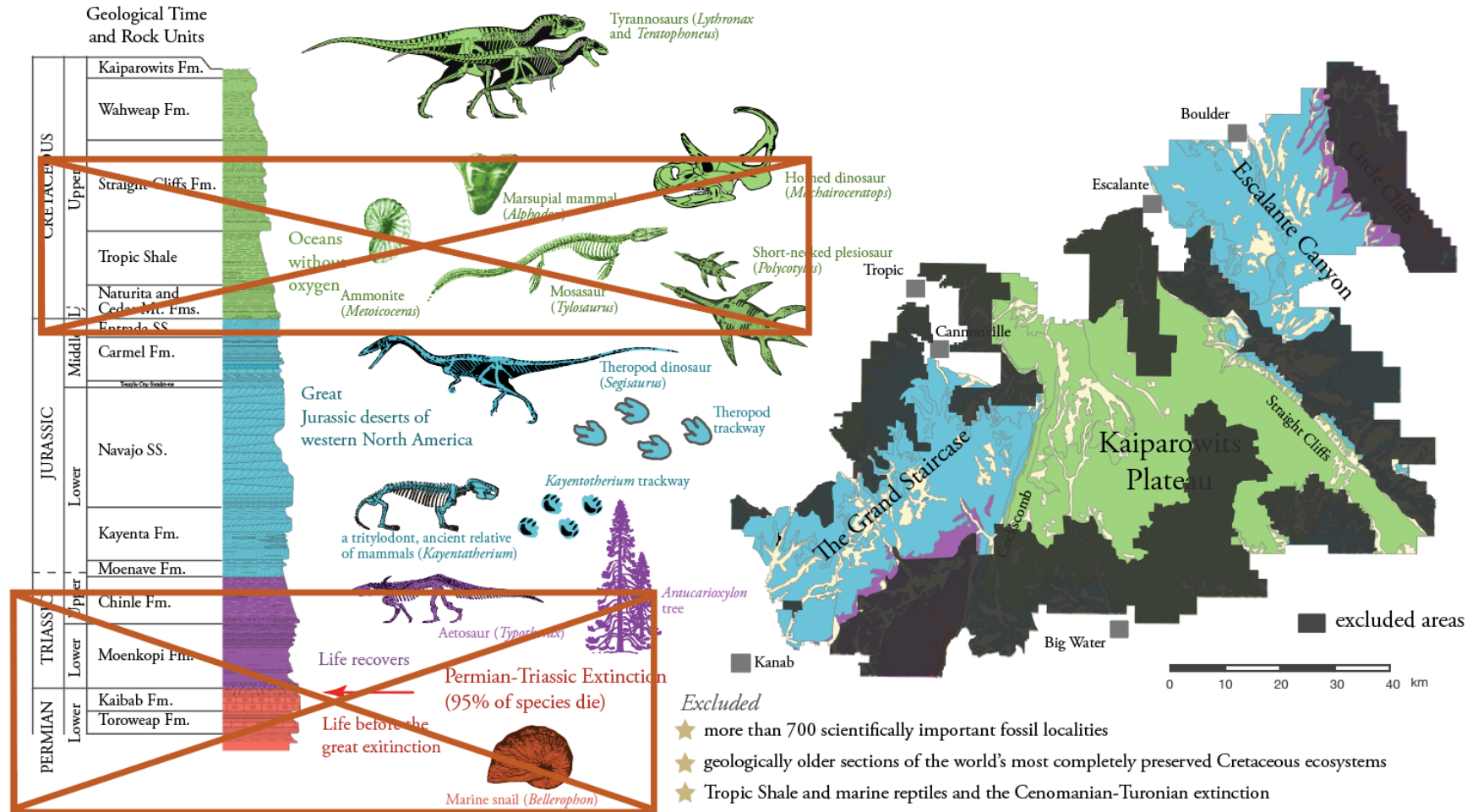


Scientifically important paleontological sites excluded from Grand Staircase-Escalante National Monument



Paleontological and Geological Resources Excluded from Grand Staircase-Escalante National Monument



Paleontological and Geological resources Excluded from Bears Ears National Monument



- ★ Hundreds of scientifically important paleontological sites have been excised from the Monument
- ★ Valley of the Gods, which has yielded some of the first vertebrates to ever walk on land, has been excluded
- ★ Sites in the Cathedral Butte area with rare burrows of ancient Triassic animals have been excluded
- ★ Cutler Group documents life in the Permian period with sail-backed *Dimetrodon* lived before the Earth's largest mass extinction
Red Canyon and Indian Creek, which contain two of the most important fossil sequences in the Monument, have been excluded
- ★ Utah's only published Triassic aged dinosaur site has been excluded

