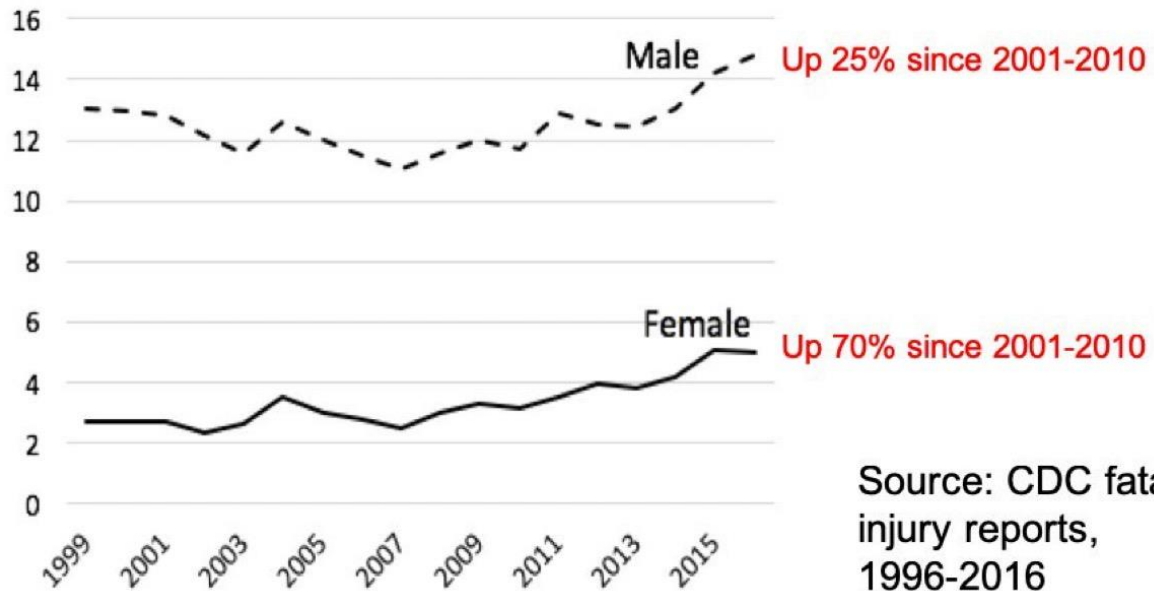
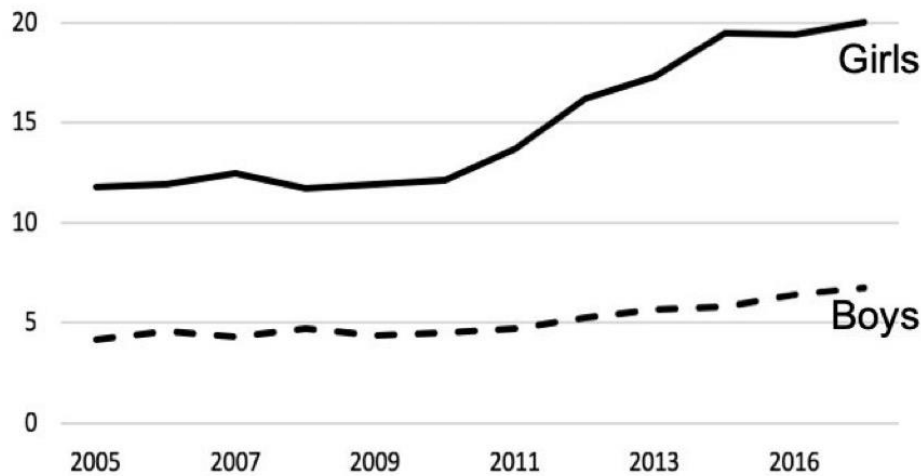


Suicide rate per 100,000, by sex, ages 15-19

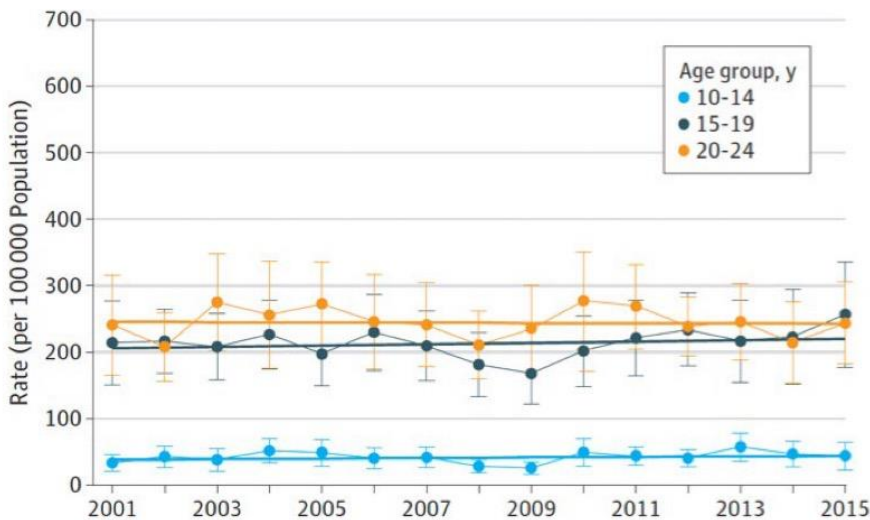


Persons Aged 12-17 Who Had At Least One Major Depressive Episode in the Past Year (% By Gender)



Hospital Admissions for non-fatal self-harm: Boys

A Males



Age 20-24

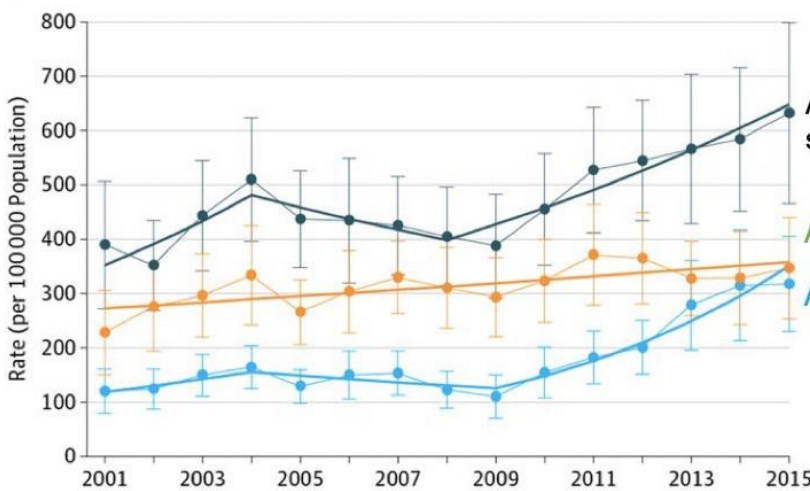
Age 15-19

Age 10-14

Source: Mercado, Holland, Leemis, Stone, & Wang (2017), JAMA

Hospital Admissions for non-fatal self-harm: Girls

B Females



Age 15-19 (+62% since 2009)

Age 20-24 (+17%)

Age 10-14 (+189%)

Source: Mercado, Holland, Leemis, Stone, & Wang (2017), JAMA

Source: Mercado, Holland, Leemis, Stone, & Wang (2017), JAMA

Figure 2. Suicide and homicide death rates among children and adolescents aged 10–14: United States, 2000–2017

