

PART No. 24905258		Sheet 0 of 7		DELPHI ELECTRONICS & SAFETY		
DATE	REV	REVISION - UPDATE DOCUMENTATION ONLY		AUTH	DR	AP
08AP09	001	Initial GES Release - Production		191471	MC	MC
REFERENCE INFORMATION (add sheets if necessary)						
NON-STANDARD DRAWING IDENTIFIER:				10392423		
NON-STANDARD DRAWING REVISION SYMBOL(S): (Include revision for all sheets)				01		
NUMBER OF NON-STANDARD DRAWING COVER SHEETS:				<u>1</u>		
NUMBER OF NON-STANDARD DRAWING SHEETS:				<u>6</u>		
NUMBER OF ADDITIONS TO COVER SHEET:				<u>N/A</u>		
TOTAL NUMBER OF SHEETS:				<u>7</u>		
NON-STANDARD DRAWING SOURCE (IF CSD, ENTER CUSTOMER):				GM		
ADDITIONAL INFORMATION:				CUST NO : 10392423		
KEY CHARACTERISTICS <input type="checkbox"/> YES <input checked="" type="checkbox"/> NO				DR	MANOJ C	DATE: 08AP09
				AP	MANOJ C	DATE: 08AP09
				AP		DATE:
				AP		DATE:
DELPHI				FIRST USED		
				N/A		
DOCUMENT DATA STORAGE:		DOC. MAN.		DWG NAME		
				OUTLINE-ANTI-THEFT IGNITION SWIT		
This cover sheet and any attached Delphi Electronics & Safety sheets are the property of Delphi Electronics & Safety. No rights are granted to use this cover sheet or any attached Delphi Electronics & Safety sheets for any purpose other than the furnishing of services and supplies to Delphi Electronics & Safety.				PART NO.		SHEET
				24905258		0 of 7

PAGE	DWG STATUS					REVISION HISTORY	AUTH	DR	CK	ENG
	DATE	STG	REL	CHG	PD1					
2	27AP04	R	001			PART NUMBER CHANGED PER WO# 302726	BGDMG	AI	EM	RD

User: FZ0P0W
 Part: 10392423 dwg:mt 0001 Date: 04-Nov-04 Time: 16.26
 Message



PAGE TITLE
 REVISION BLOCK

DRAWING NUMBER

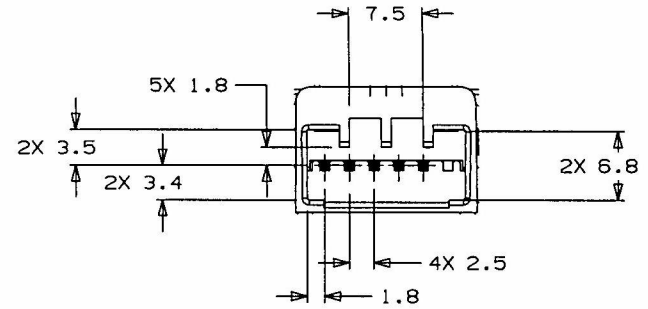
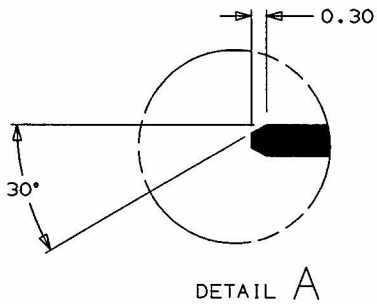
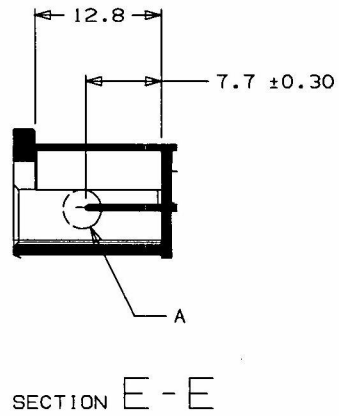
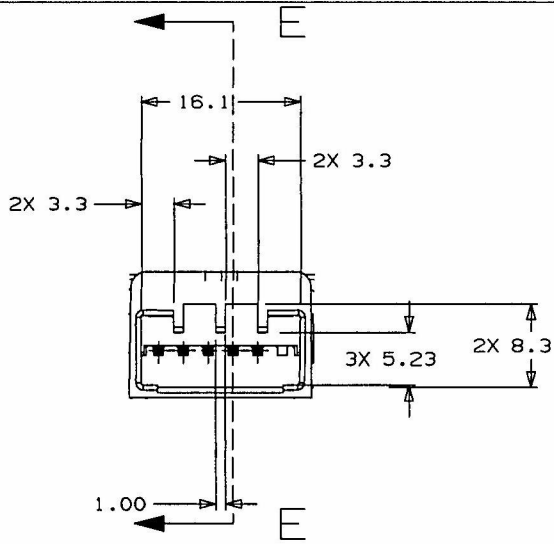
10392423

DWG STATUS

STG	REL	PD1
R	001	

PAGE NUMBER

2 of 7



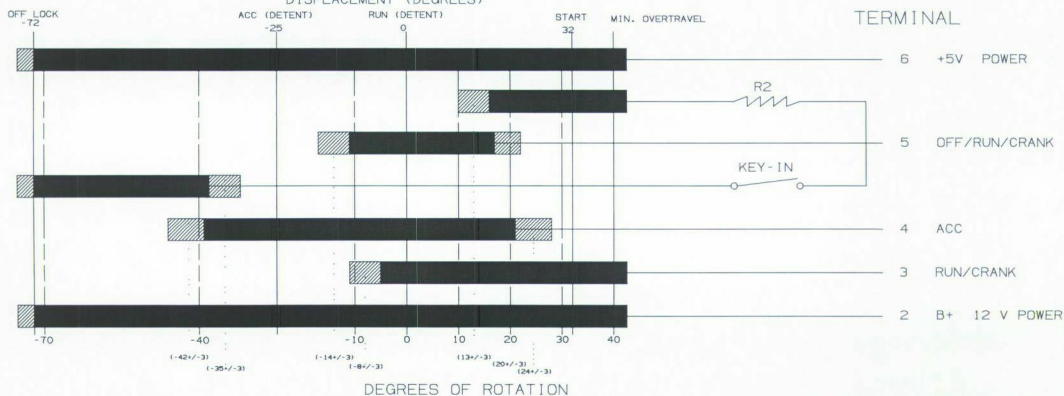
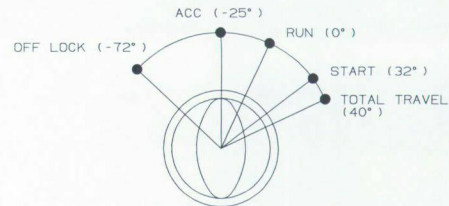
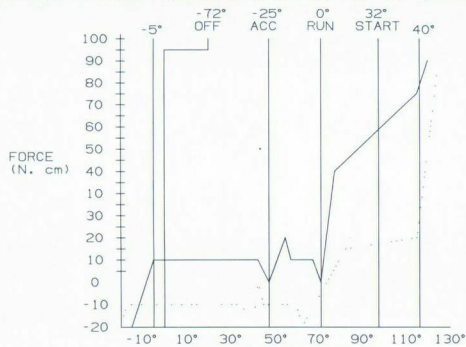
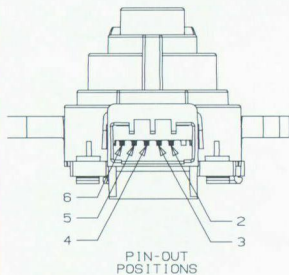
NOTE:

1. MUST MATE WITH JAE CONNECTOR P/N 1L-AG5-6S-S3C1-DG
2. CONNECTOR INSERTION FORCE MUST NOT EXCEED 50 N

User: FZOPDW Part: 10392423 dwg/mf.0001 Date: 04-Nov-04 Time: 16:26 Message

										01	10392423			R	001	ANTI-THEFT IGNITION SWITCH				10392423	PKG 0001									
																DRAWING				10392423	DWGFM 0001									
HIERARCHY / QUANTITY										DWG ITM	DWG RL TN SHIP	PART NUMBER	P-A ITM	D L S	DES STG	REL LVL	P D I	N M C I	MASS (Kg)	PART NAME				OBJECT	SHT	ITM	MF I	CLASS	SEQ NO	DWG COLLECTOR
PARTS SHOWN ON DRAWING															FILES TO BUILD DRAWING															
										PAGE TITLE PART BLOCK										DRAWING NUMBER 10392423				DWG STATUS STG REL PDI R 001			PAGE NUMBER 3 of 7			

SWITCH TRAVEL REQUIREMENTS & ELECTRICAL MECHANIZATION



MAY MAKE CONTACT (± 3 TOLERANCE)
 MUST MAKE CONTACT

R2: THEFT RESISTOR, 1/4 W, 1%
 1 OF 10 POSSIBLE PREDEFINED STANDARD VALUES
 RANGING FROM 300 Ohms to 9K Ohms



PAGE TITLE
GENERAL NOTES

DRAWING NUMBER

10392423

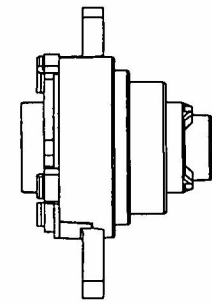
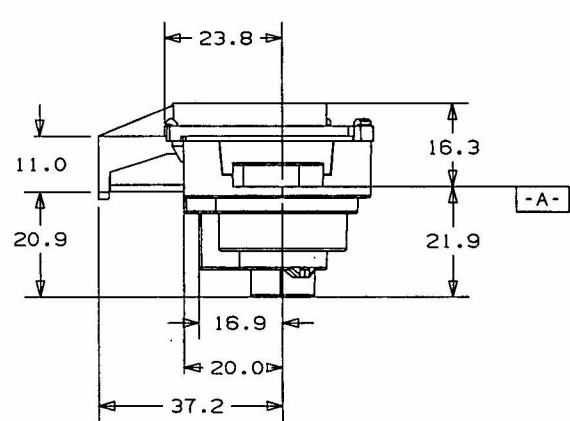
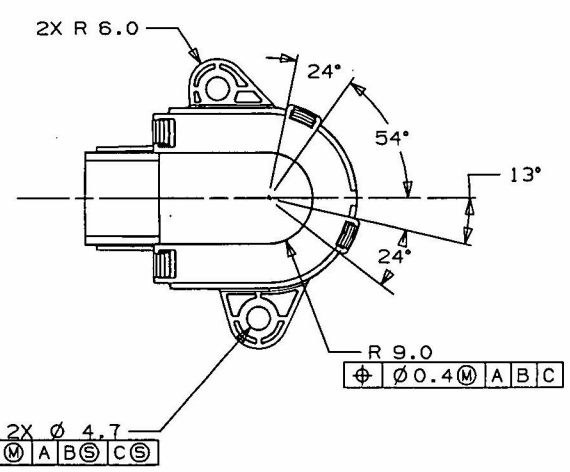
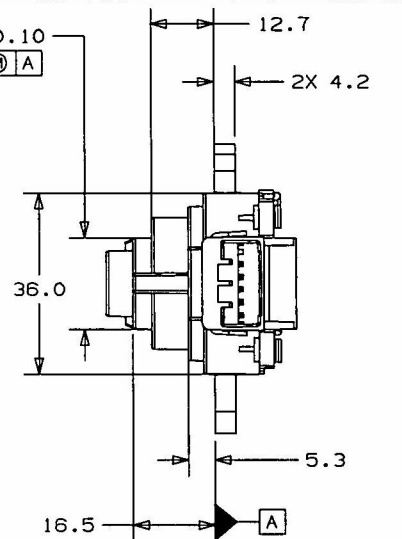
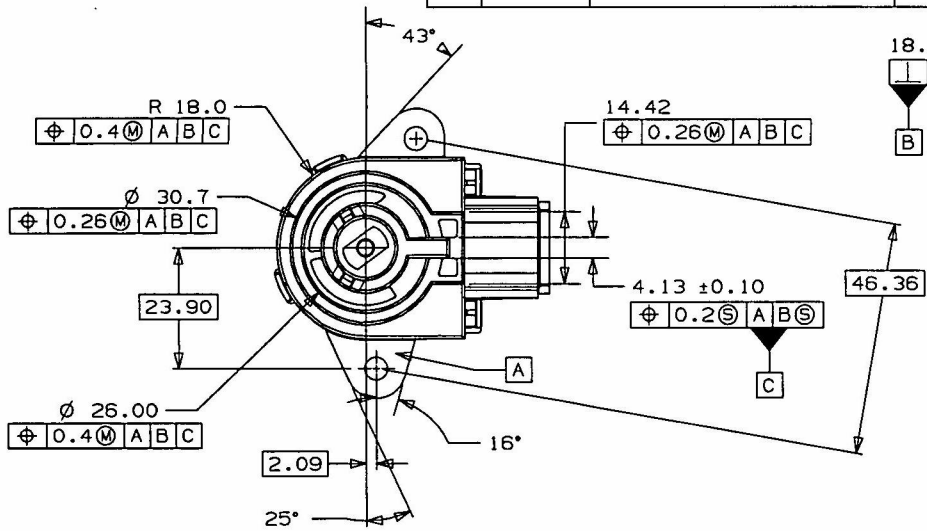
DWG STATUS			PAGE NUMBER
STG	REL	PD1	
R	001		4 OF 7

KEY PRODUCT CHARACTERISTICS

- ⊖ SAFETY/COMPLIANCE ⬠ FIT/FUNCTION
- ⊗ S/C CHECKPOINTS ⬠ F/F CHECKPOINTS

TOTAL ON DRAWING	-
LAST NO. USED	-

NO	TYPE	DRAWING ITEMS	DESCRIPTION	RATIONALE	PTS	PAGE	ASM/MAN	CRITERIA
----	------	---------------	-------------	-----------	-----	------	---------	----------



User: FZ0P0W
Part: 10392423 dwg/mi.0001 Date: 04-Nov-04 Time: 16.26
Message

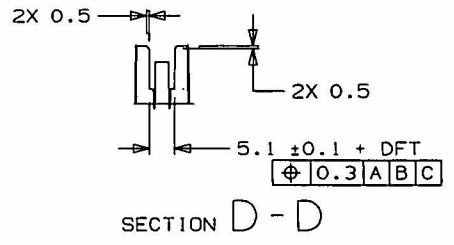
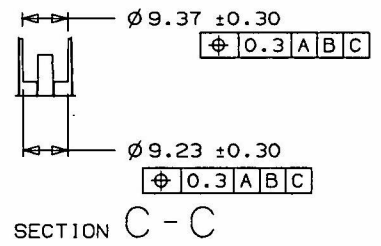
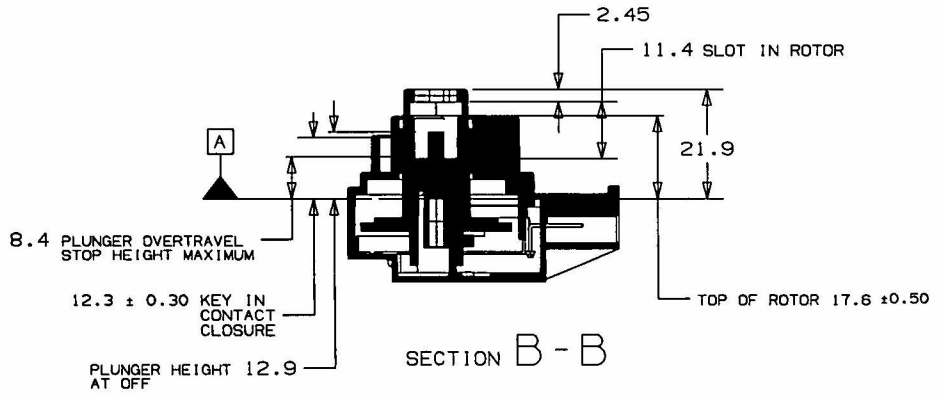
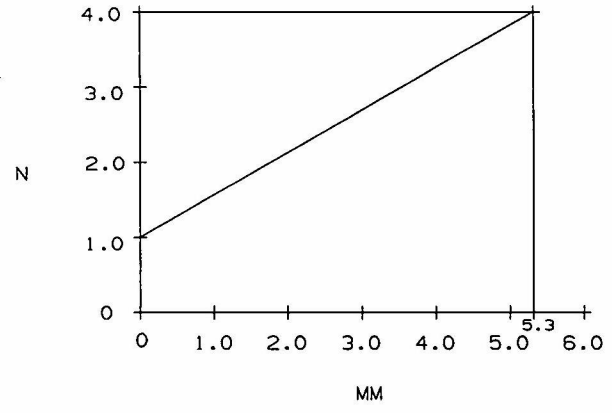
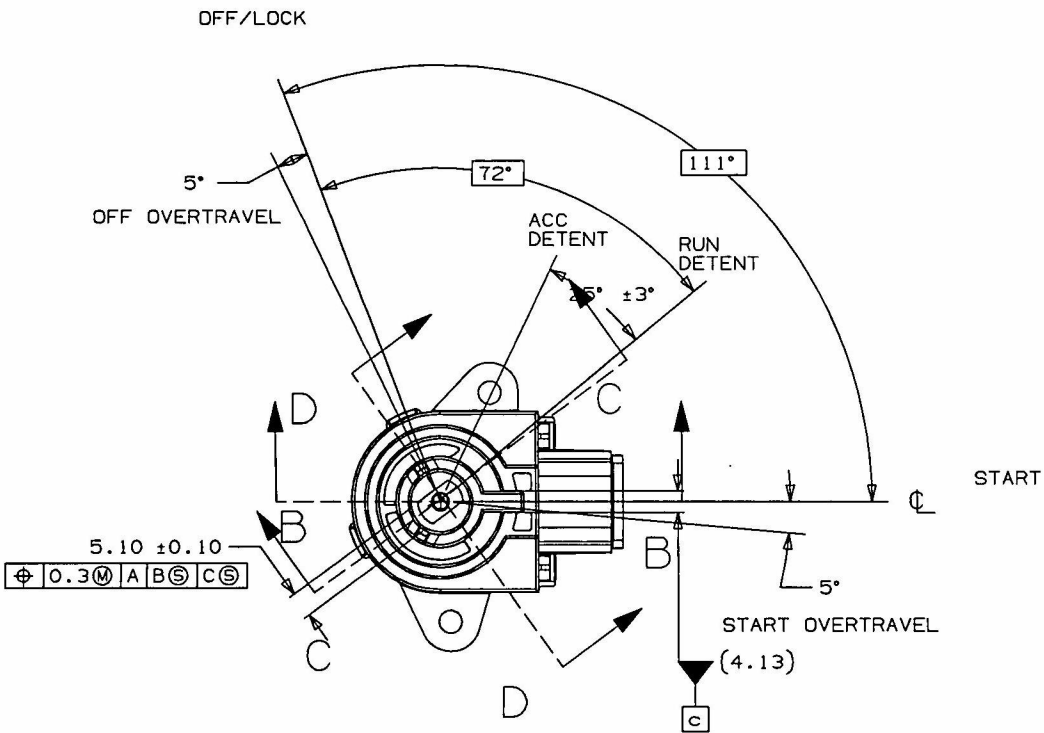
GM PAGE TITLE
KPC CHART AND VIEWS

DRAWING NUMBER
10392423

DWG STATUS			PAGE NUMBER
STG	REL	PDI	
R	001		5 OF 7

User: FZOPDW Part: 10392423 dwg/rl 0001 Date 04-Nov-04 Time: 16.26 Message

DATUMS			
PAGE	DATUM	DESCRIPTION	DIRECTION
5	A	MOUNTING FLANGE	
5	B	DELTA MOUNTING ANG. LOCATOR	
5	C	DELTA MOUNTING CYLINDER	



GM PAGE TITLE
DATUM AND VIEWS

DRAWING NUMBER
10392423

DWG STATUS			PAGE NUMBER
STG	REL	PDI	
R	001		6 OF 7

MATERIAL : SEE BELOW

TOLERANCE AND DIMENSIONS UNLESS

X.X (+/- 0.26MM)

X.XX (+/- 0.13MM)

(+/- 2 DEGREES)

RECYCLING GUIDELINES
PER GM502M. MARK PARTS
PER SAE J1344 METHOD 2

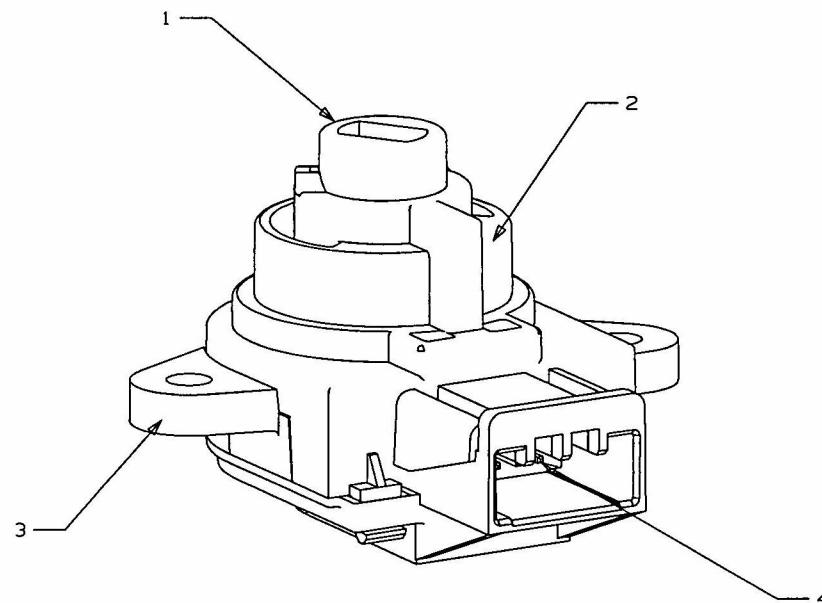
RESTRICTED AND REPORTABLE
CHEMICALS PER GMW3059

FLAMMABILITY: MOLDED PLASTICS MUST MEET GM 6090M (B4-A)

MOLDED PLASTIC MUST MEET GM 7400M (05B5).

GENERAL NOTES

1. THEFT SLEEVE - 25% GLASS FILLED ACETAL PER GMP.PDM.006
2. COVER - 33% GLASS FILLED NYLON 66 PER GMP.PA66.013, COLOR: BLACK
3. BASE - 33% GLASS FILLED NYLON 66 PER GMP.PA66.013, COLOR: BLACK
4. TERMINAL HEADER PINS - COPPER ALLOY UNS C51000 PER SAE J461
TIN/LEAD SOLDER PLATE CU/SNPB5 SC1 PER ASTM B579
5. TORSION SPRING - MUSIC WIRE PER ASTM A228
6. CONTACT TERMINALS - COPPER ALLOY UNS C77000, SPRING TEMPER PER SAE J461
7. PCB BOARD TYPE: UV GRADE FR4 PRINTED CIRCUIT BOARD
8. MECHANICAL GREASE FOR DETENT PLUNGER - GM2793M OEO (NS-1304-G)
9. ELECTRICAL GREASE FOR PCB CONTACT - GM2793M OEO (NS-1304-G)
10. DETENT PLUNGER: METAL CAP - NICKEL PLATED STEEL
METAL COIL SPRING - MUSIC WIRE PER ASTM A228



PAGE TITLE
LABELED MATERIALS

DRAWING NUMBER

10392423

DWG STATUS

STG	REL	PD1
R	001	

PAGE NUMBER

7 OF 7