



CRITICAL INFRASTRUCTURE SECTORS

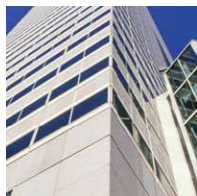
There are 16 critical infrastructure sectors whose assets, systems, and networks, whether physical or virtual, are considered so vital to the United States that their incapacitation or destruction would have a debilitating effect on security, national economic security, national public health or safety, or any combination thereof. Presidential Policy Directive 21 (PPD-21): Critical Infrastructure Security and Resilience advances a national policy to strengthen and maintain secure, functioning, and resilient critical infrastructure. This directive supersedes Homeland Security Presidential Directive 7.

Guidance on the Essential Critical Infrastructure Workforce



Chemical Sector

The Department of Homeland Security is designated as the Sector Risk Management Agency for the Chemical Sector.



Commercial Facilities Sector

The Department of Homeland Security is designated as the Sector Risk Management Agency for the Commercial Facilities Sector, which includes a diverse range of sites that draw large crowds of people for shopping, business, entertainment, or lodging.



Communications Sector

The Communications Sector is an integral component of the U.S. economy, underlying the operations of all businesses, public safety organizations, and government. The Department of Homeland Security is the Sector Risk

Management Agency for the Communications Sector.



Critical Manufacturing Sector

The Department of Homeland Security is designated as the Sector Risk Management Agency for the Critical Manufacturing Sector.

Dams Sector



The Department of Homeland Security is designated as the Sector Risk Management Agency for the Dams Sector. The Dams Sector comprises dam projects, navigation locks, levees, hurricane barriers, mine tailings impoundments, and other similar water retention and/or control facilities.

TLP:WHITE



Defense Industrial Base Sector

The U.S. Department of Defense is the Sector Risk Management Agency for the Defense Industrial Base Sector. The Defense Industrial Base Sector enables research, development, design, production, delivery, and maintenance of military weapons systems, subsystems, and components or parts to

meet U.S. military requirements.



Emergency Services Sector

The Department of Homeland Security is designated as the Sector Risk Management Agency for the Emergency Services Sector. The sector provides a wide range of prevention, preparedness, response, and recovery services during both day-to-day operations and incident response.



Energy Sector

The U.S. energy infrastructure fuels the economy of the 21st century. The Department of Energy is the Sector Risk Management Agency for the Energy Sector.



Financial Services Sector

The Department of the Treasury is designated as the Sector Risk Management Agency for the Financial Services Sector.



Food and Agriculture Sector

The Department of Agriculture and the Department of Health and Human Services are designated as the co-Sector-Risk Management Agencies for the Food and Agriculture Sector.



Government Facilities Sector

The Department of Homeland Security and the General Services Administration are designated as the Co-Sector Risk Management Agencies for the Government Facilities Sector.



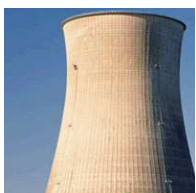
Healthcare and Public Health Sector

The Department of Health and Human Services is designated as the Sector Risk Management Agency for the Healthcare and Public Health Sector.



Information Technology Sector

The Department of Homeland Security is designated as the Sector Risk Management Agency for the Information Technology Sector.



Nuclear Reactors, Materials, and Waste Sector

The Department of Homeland Security is designated as the Sector Risk Management Agency for the Nuclear Reactors, Materials, and Waste Sector.

Transportation Systems Sector

The Department of Homeland Security and the Department of Transportation are designated as the Co-Sector-Specific Agencies for the Transportation Systems Sector.

TLP:WHITE



Water and Wastewater Systems Sector

TLP:WHITE

The Environmental Protection Agency is designated as the Sector Risk Management Agency for the Water and Wastewater Systems Sector.

Last Updated Date: October 21, 2020

TLP:WHITE