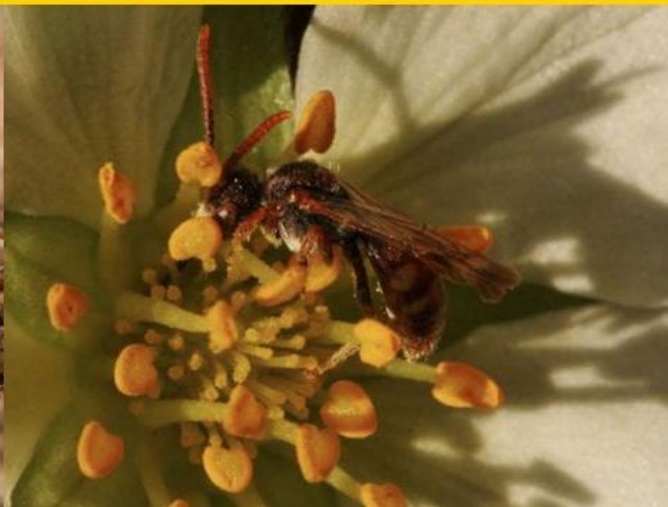


» Emergency Contact Information



Rights-of-Way (ROW) integrated vegetation management for reliable, safe, and affordable energy transmission and concurrent benefits to native wildlife habitat

Carolyn G. Mahan, PhD, Professor, Biology; Chair,
Environmental Studies Program, Penn State

<https://sites.psu.edu/rightofway/>

Integrated Vegetation Management (IVM): the practice of using a combination of chemical (selective herbicide), biological (small mammals, plant competition), cultural (fire, grazing), mechanical (mowing, hand-cutting), and/or manual treatments (hand pulling) to achieve a desired vegetation condition.

The IVM approach strives to manage vegetation and the environment by balancing the benefits of:

- Cost
- Control of non-compatible vegetation
- Environmental quality (e.g., biodiversity)
- Public safety
- Regulatory compliance

IVM strategies are both integrative and site-specific.

https://www.epa.gov/sites/default/files/2016-03/documents/ivm_fact_sheet.pdf



IVM Treatments Plumas NF

- Recipe -
- No Seeding
- Natural Seed Bank
- Precipitation & Sun Light
- UVM Experienced Licensed Professionals
- Targeted herbicide Low-Volume (backpack application)



Integrated vegetation management (IVM) project along an electric transmission line corridor, Plumas Nat'l Forest, Quincy, **California**

Monarch butterfly begins its migration to Mexico after nectaring on native sunflowers (*Helianthus*). Photo taken along FirstEnergy/PECO transmission line, **Pennsylvania**

Achieved by IVM and native seed bank

Shell Midstream, Falcon Natural Gas Pipeline; Southwestern, Pennsylvania (Washington Co.)

Left: Traditionally maintained, mowed pipeline

Right: Integrated vegetation management maintenance NOTE: Milkweed and herbaceous plants

Photos taken at same location; native seed bank

