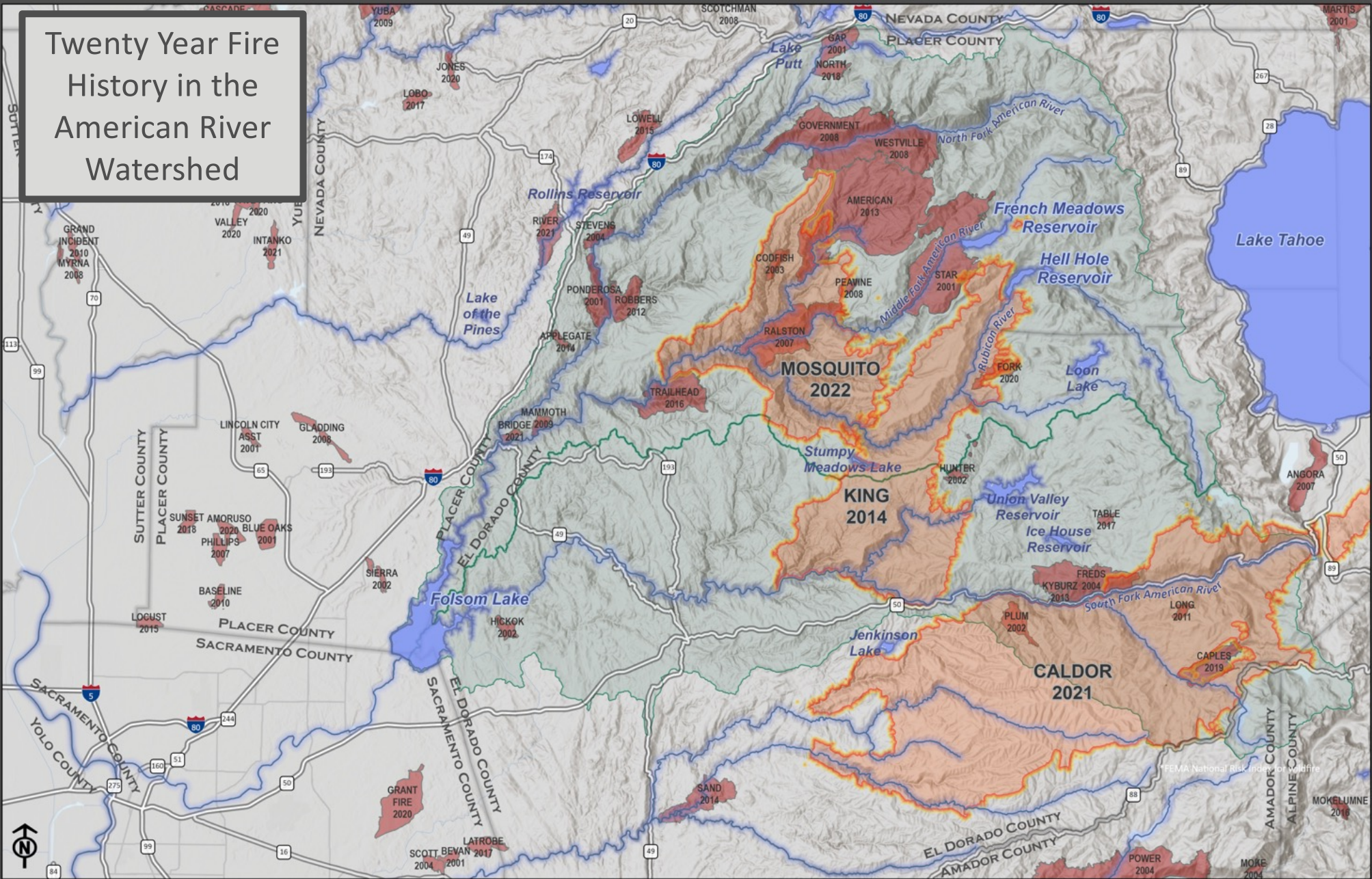


PLACER COUNTY WATER AGENCY

TESTIMONY

PROVEN FOREST MANAGEMENT ACT OF 2022 (H.R. 188, MCCLINTOCK)

Twenty Year Fire History in the American River Watershed



Mosquito Fire Impacts

The Mosquito Fire was the largest fire in California in 2022. Placer County communities and PCWA's Middle Fork American River Hydroelectric Project have been severely impacted as a result.

76,788 Acres burned & **50** Days of active fire

11,000+ People evacuated from their homes and communities, including **35** PCWA employees

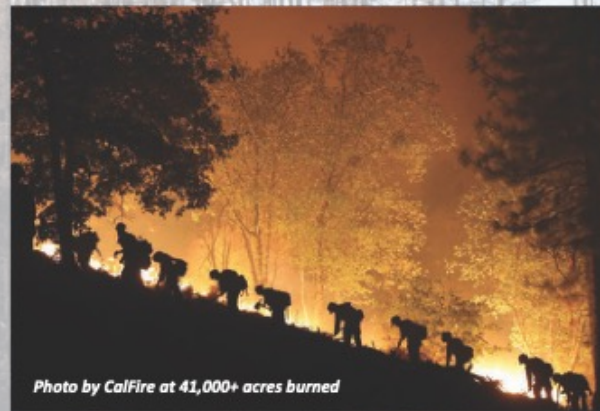
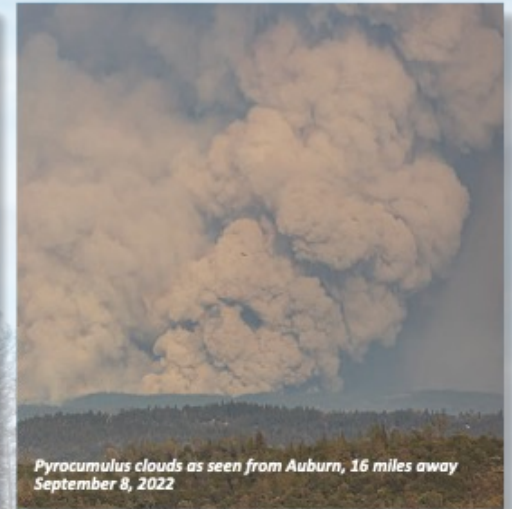
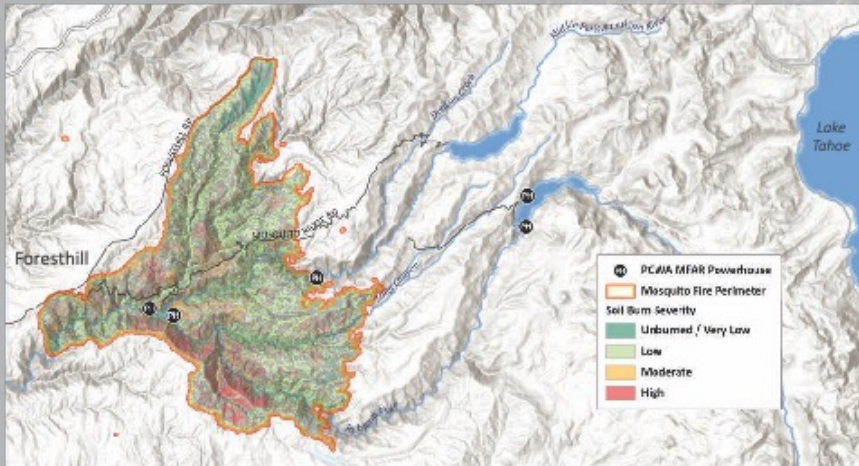
428 Air quality index reported in areas of Placer County, reaching "hazardous" conditions

116 Days (in 2022 alone) PCWA hydropower facilities not able to transmit clean energy to the California electric grid

\$10Ms Tens of millions of dollars lost in power production sales

Up to **600,000** Cubic yards of new sediment estimated to accumulate into PCWA reservoirs

Soil burn severity: **9%** high, **25%** moderate, **66%** low/very low



A special acknowledgment to the following agencies for their tireless efforts:





FUEL TREATMENT SUCCESSES

Caldor Fire Area | South Lake Tahoe

Despite the difficulty in managing this fire and the demanding fire environment, there are success stories to be found in the hazardous fuels treatments that have been put in place in and around Lake Tahoe and the surrounding communities. While even the most effective fuels treatments may not modify fire behavior when there are intense winds, there is no doubt that homes were saved and firefighters were able to work more safely and aggressively to suppress the fire because of treatments in this area.



Extensive firefighting operations, residents maintaining defensible space around their homes, and past forest management projects are credited for helping to save structures around South Lake Tahoe. The Forest Service has completed both prescribed burns and vegetation thinning operations in the last 10 years of their forest clearing initiative, reducing fuel in fire-susceptible areas. Christmas Valley, South Lake Tahoe, California.

