

ATTACHMENTS TO

**Written Testimony of
Trey Acteson, Chief Executive Officer
Southeast Alaska Power Agency,
In Support of H.R. 219**

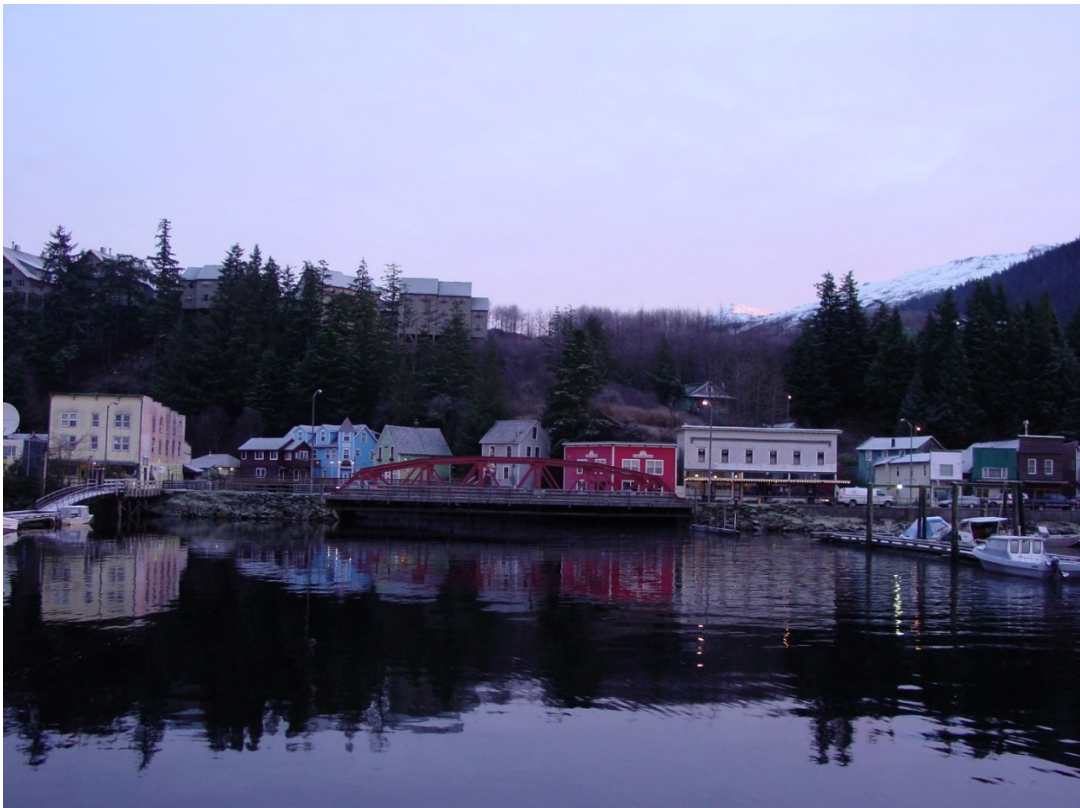
ATTACHMENT 1

Map and Photos of the Swan Lake Project



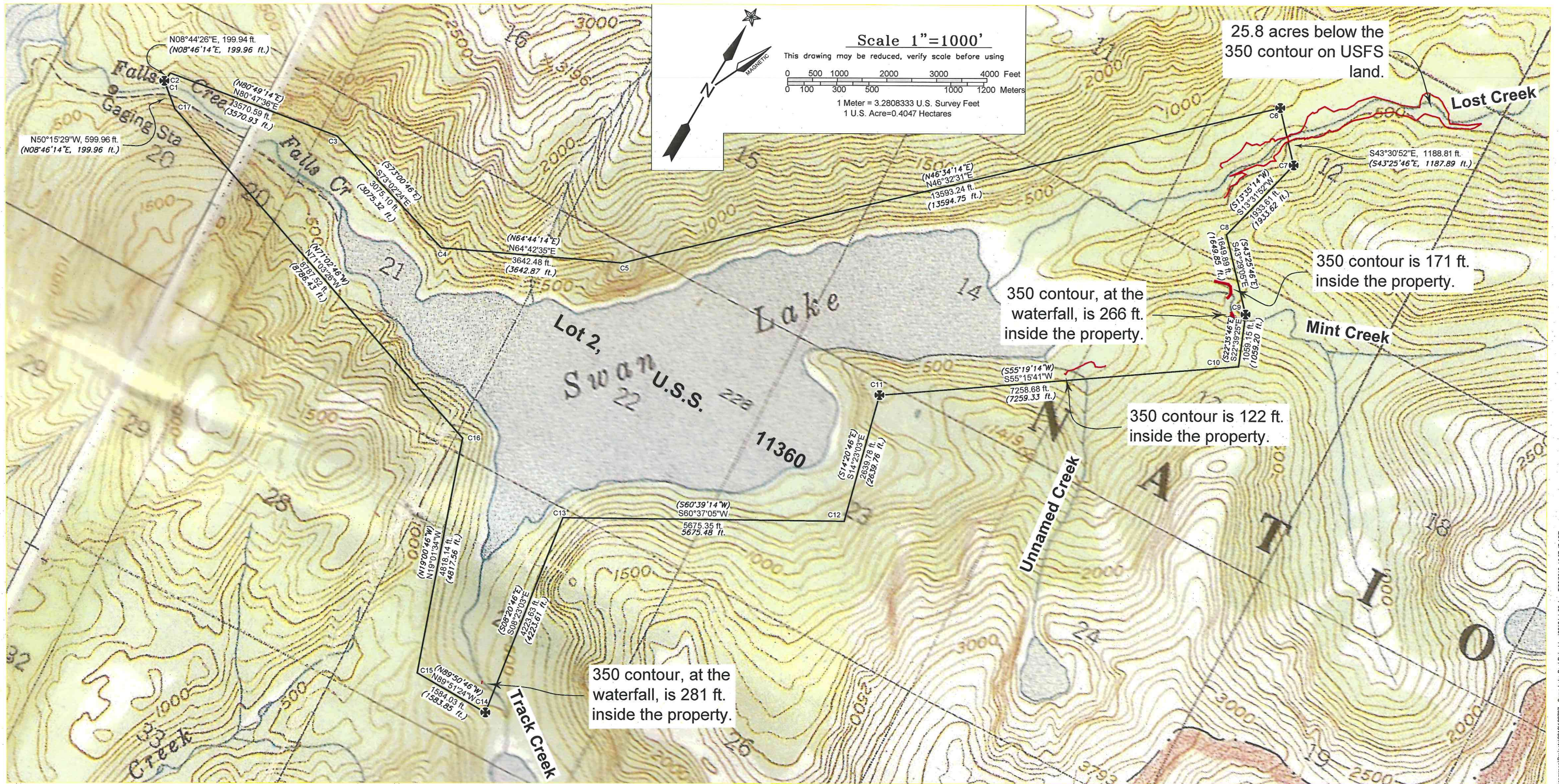


Ketchikan Photos



ATTACHMENT 2

Map Depicting Survey Error



LEGEND

- ⛶ Bureau of Land Management monument recovered and tied this survey.
- () Indicates data from the record of U.S. Survey 11630, see note 2.
- 350 foot contour surveyed and marked.

NOTES

- The horizontal coordinate system employed is the Alaska State Plane Coordinate System, Zone 1, North American Datum of 1927. The elevations are relative to Local Mean Lower Low Water. This is the same coordinate system used in the original construction drawings for the Swan Lake Power Project prepared by R.W. Beck and Associates and the Exhibits in the documents submitted to the Federal Energy Regulatory Commission. The coordinates for the Theodolite Pier at the Swan Lake Dam (also identified as Corner 1, Lot 2, U.S. Survey 11630) were held and used to generate the coordinates in this survey. The linear units are U.S. Survey Feet.
- The record data from U.S. Survey 11630 was brought into the project coordinate system by applying the state plane corrections for convergence angle and scale factor at the Theodolite Pier.
Latitude = 55°36'55.9467" N
Longitude = 131°20'39.9000" W (NAD 27)
Convergence angle = 1°55'46"
Scale Factor = 0.999908376



July 30, 2012

REVISION	DATE	DESCRIPTION	APPROVED
REVISIONS			

Do not scale, use dimensions whenever possible			
Map of Survey of Swan Lake Pool Raise near Ketchikan, Alaska			
Client: Southeast Alaska Power Authority 1900 First Ave., Suite 318 Ketchikan, AK 99901			
R&M			
R&M ENGINEERING-KETCHIKAN, INC. 355 Carlanna Lake Road Ketchikan, AK 99901		Phone: (907) 225-7917 Fax: (907) 225-3441	
Date: July 30, 2012	Drawn by: JPP	Job No. 122737	
Scale: 1 in. = 1000 ft.	Apprvd by: <i>[Signature]</i>	Sheet 1 of 1	

7/30/12

ATTACHMENT 3

Photos of Completed Swan Lake Dam Raise



Swan Lake Dam – 174' High x 430' Width at Crest



Before



After



Middle Pier Concrete Placement



Gate Piers Complete – Flashboard Columns Erected



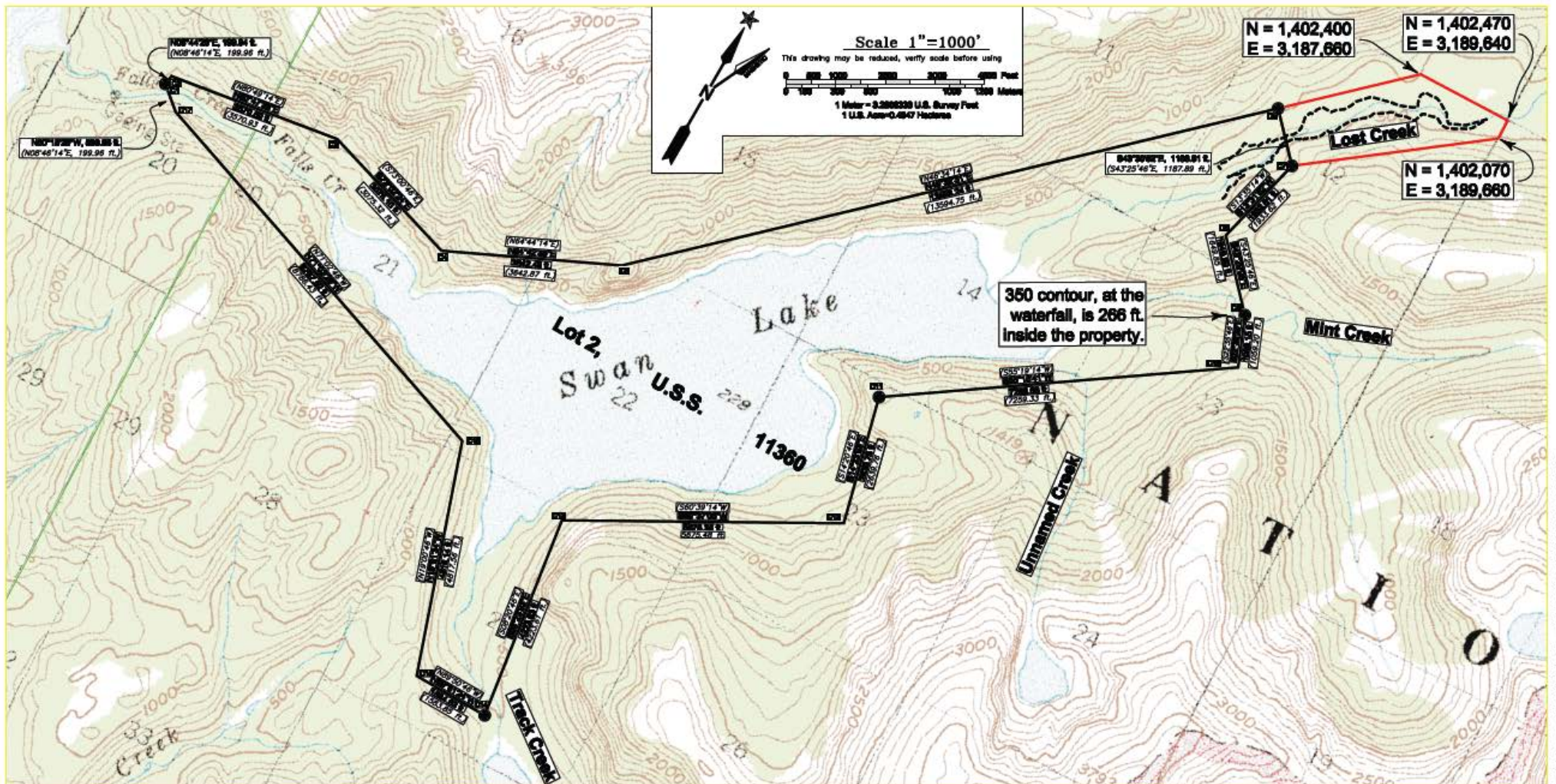
Crane on Barge – Placing Flashboard Panels and Vertical Gate



Spillway Construction Complete – 15 Foot Reservoir Elevation Increase

ATTACHMENT 4

Map Depicting 26 Acres to be Conveyed under H.R. 219



Do not scale, use dimensions whenever possible

**Swan Lake
Project Boundary - Lot 2**
near Katchikan, Alaska

Client: Southeast Alaska Power Authority
1000 First Ave., Suite 210
Katchikan, AK 99001

RSM
RSM Engineering & Construction, Inc.
2000 Central Lake Road
Ketchikan, AK 99901

Phone: (907) 225-1212
Fax: (907) 225-5441

Date: Feb. 01, 2018
Drawn by: JPP
Job No.: 180708
Scale: 1 in. = 1000 ft.
Sheet: 1 of 1

1	Aug. 1, 2018	Initial 2018 Rev. Local file generated from 1 sheet revision of coordinates	JPP
REVISION	DATE	DESCRIPTION	APPROVED
		REVISIONS	