









**Legend**

**Existing Features**

- ★ Businesses
- Roads
- BWCAW
- Twin Metals Minnesota Deposits

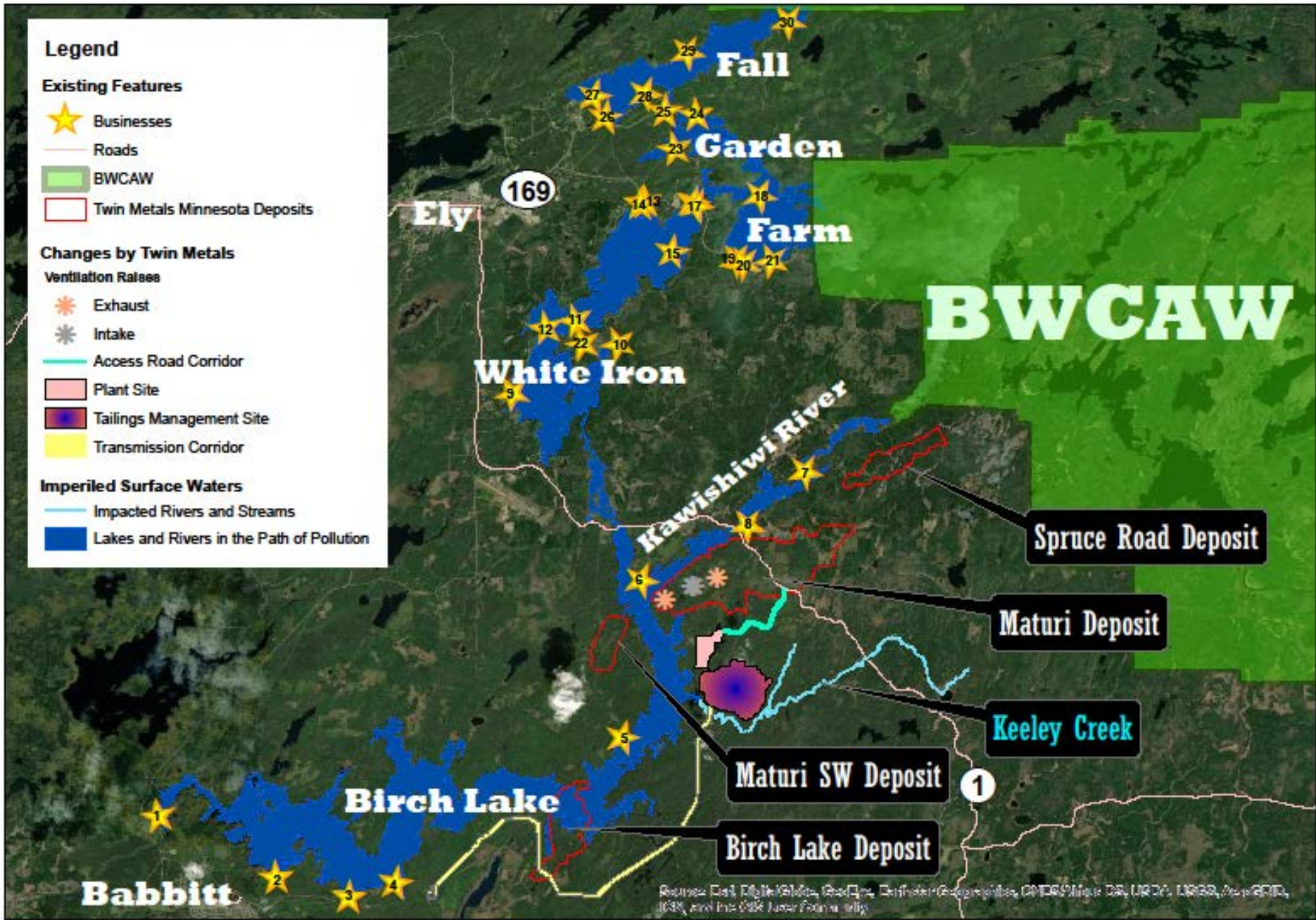
**Changes by Twin Metals**

**Ventilation Rafters**

- ★ Exhaust
- ★ Intake
- Access Road Corridor
- Plant Site
- Tailings Management Site
- Transmission Corridor

**Imperiled Surface Waters**

- Impacted Rivers and Streams
- Lakes and Rivers in the Path of Pollution



Created by: J. Wolfe, January 6, 2020  
 Northeastern Minnesotans for the Wilderness