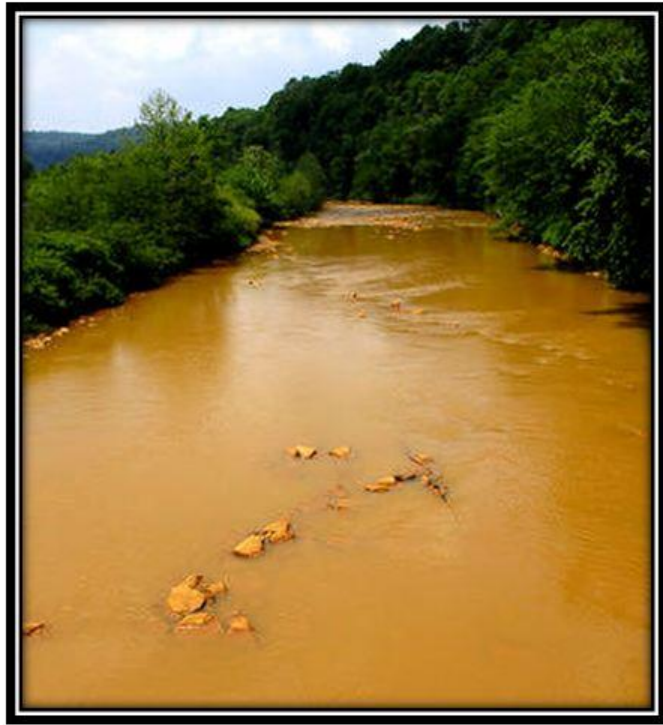




Coal refuse towers above houses in Ehrenfeld, PA and nearby communities. As part of an AML and AML Pilot I contract, 3.2M tons of refuse material will be removed resulting in 62 acres of reclaimed land.

LITTLE CONEMAUGH AT MINERAL POINT



This picture shows the benefit of public-private partnerships. Rosebud Mining's Topper Run facility is treating more than 33% of the loading to the Little Conemaugh. The photo was taken approximately 10 miles downstream at Mineral Point, PA. The picture on the left shows untreated water. The picture on the right shows maximum plant treatment discharging 10,000 gallons per minute (GPM).