



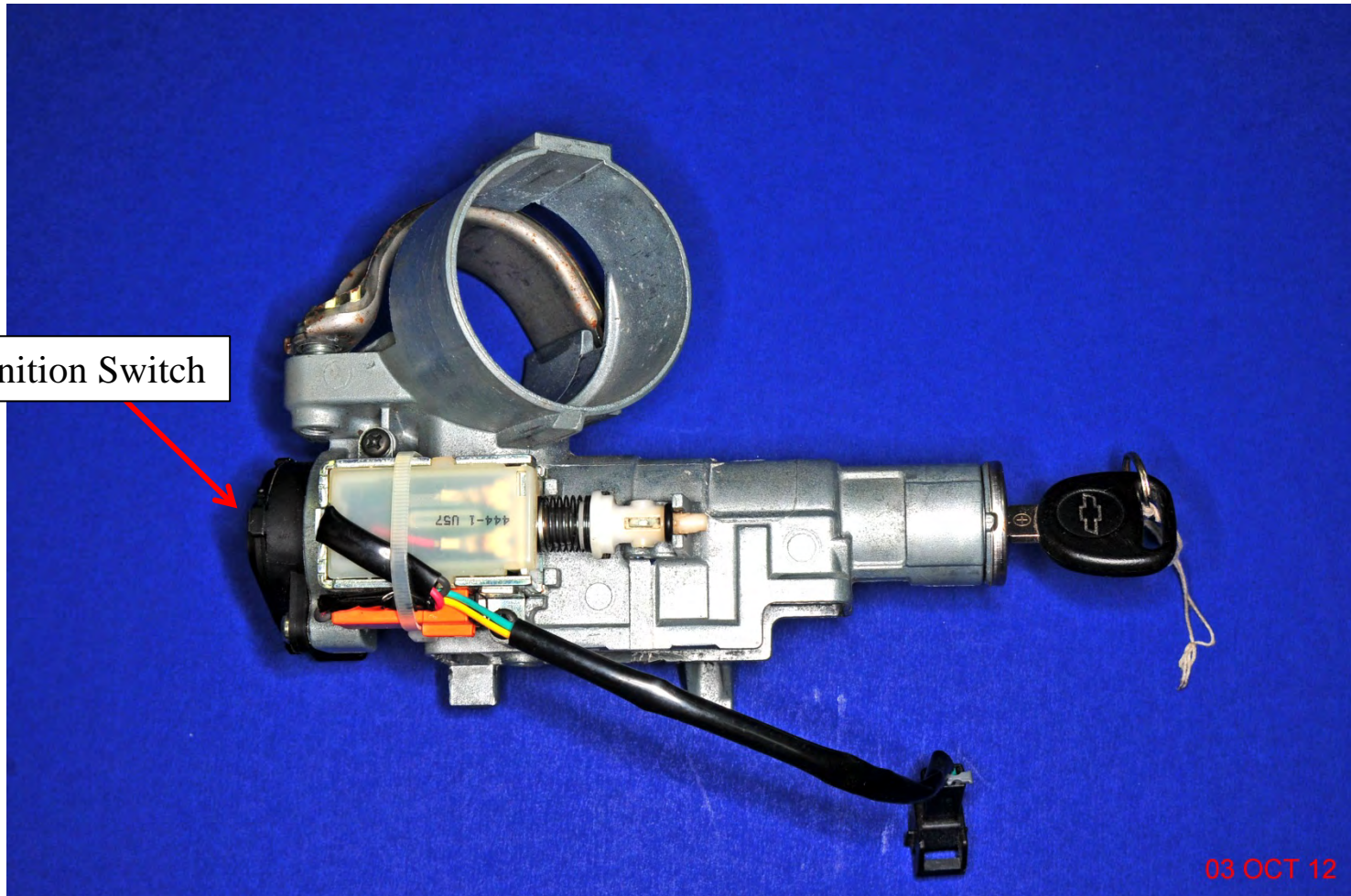
# McSWAIN ENGINEERING, INC.

PROJECT:

General Motors Ignition Switch

Subject-Type Chevrolet Cobalt Ignition

Ignition Switch



03 OCT 12

DP-E002

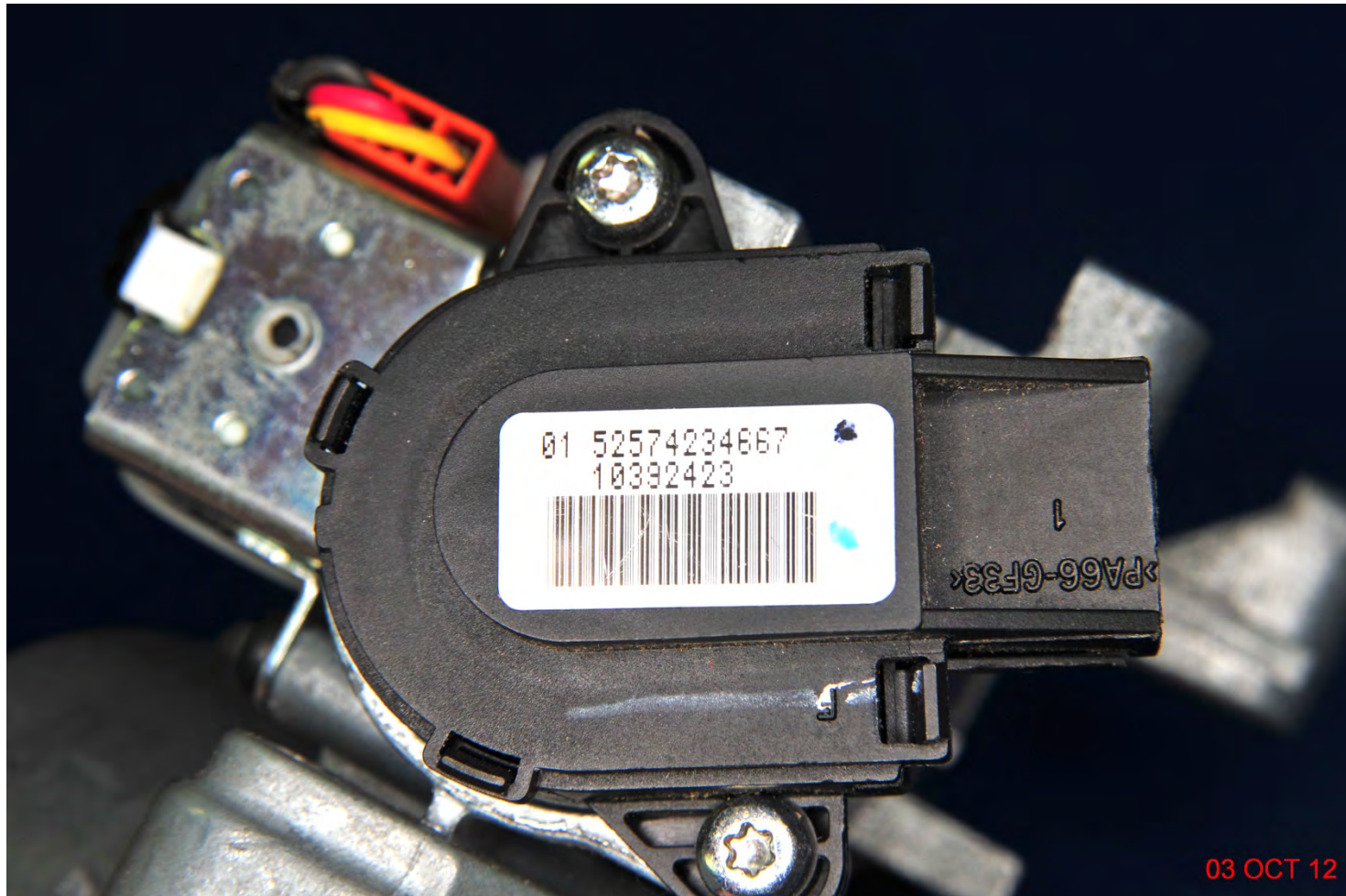


# McSWAIN ENGINEERING, INC.

PROJECT:

General Motors Ignition Switch

Subject-Type Chevrolet Cobalt Ignition Switch



03 OCT 12

DP-E010

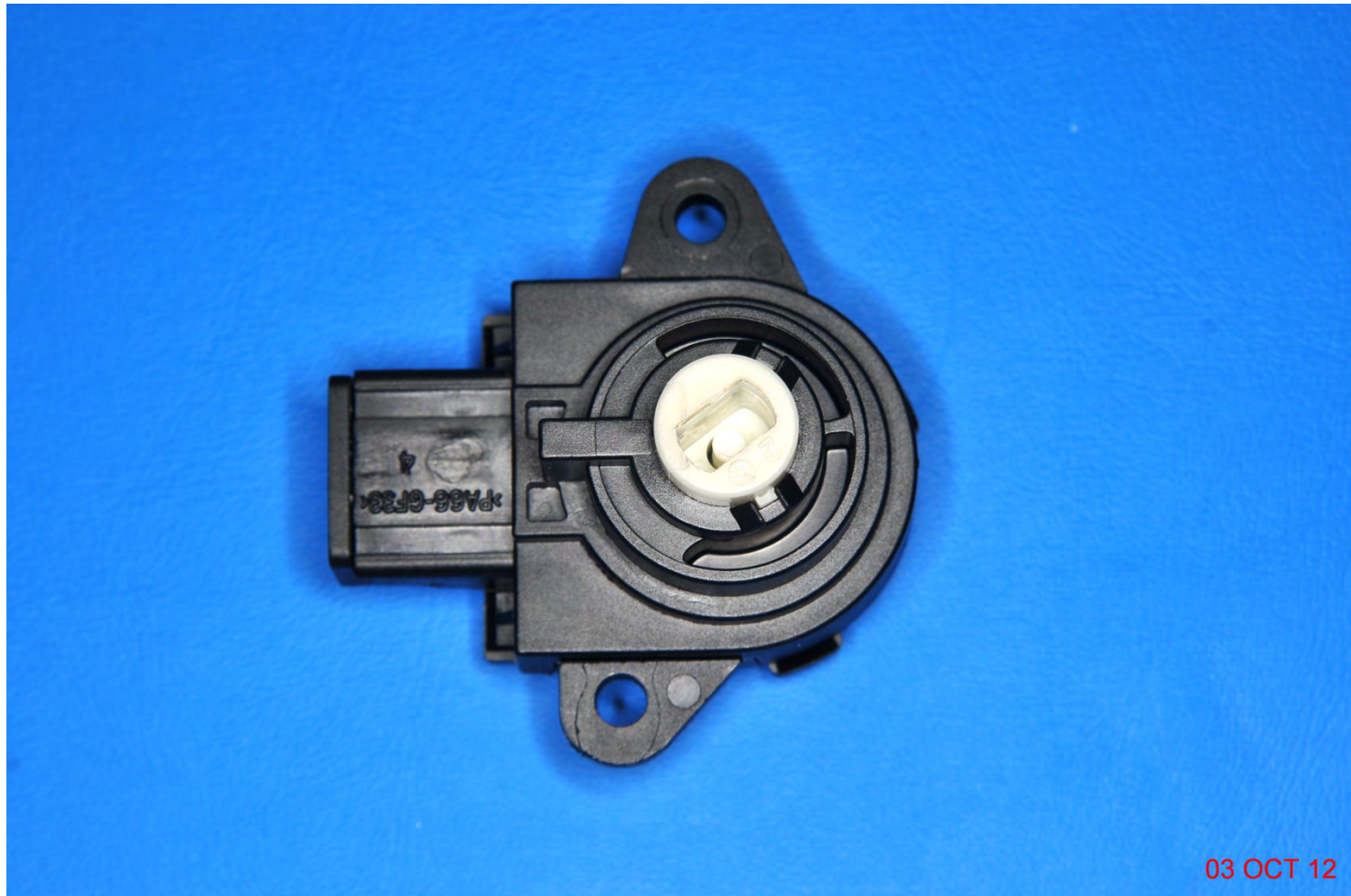


# McSWAIN ENGINEERING, INC.

PROJECT:

General Motors Ignition Switch

Subject-Type Chevrolet Cobalt Ignition Switch



03 OCT 12

DP-E013



# McSWAIN ENGINEERING, INC.

PROJECT:

General Motors Ignition Switch

Subject-Type Chevrolet Cobalt Ignition Switch



03 OCT 12

DP-E014

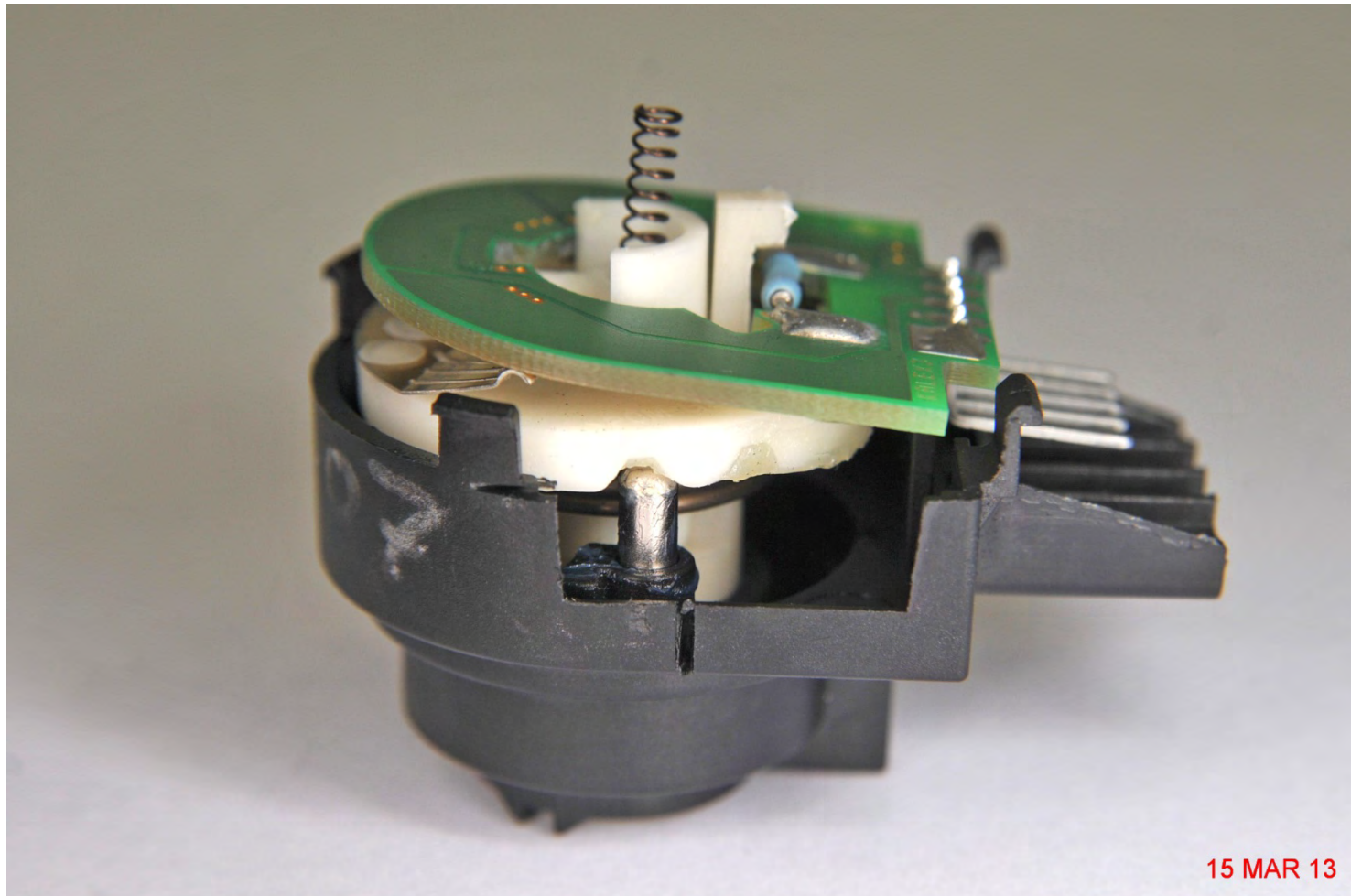


# McSWAIN ENGINEERING, INC.

PROJECT:

General Motors Ignition Switch

Subject-Type Chevrolet Cobalt Ignition Switch



15 MAR 13

DP-E094

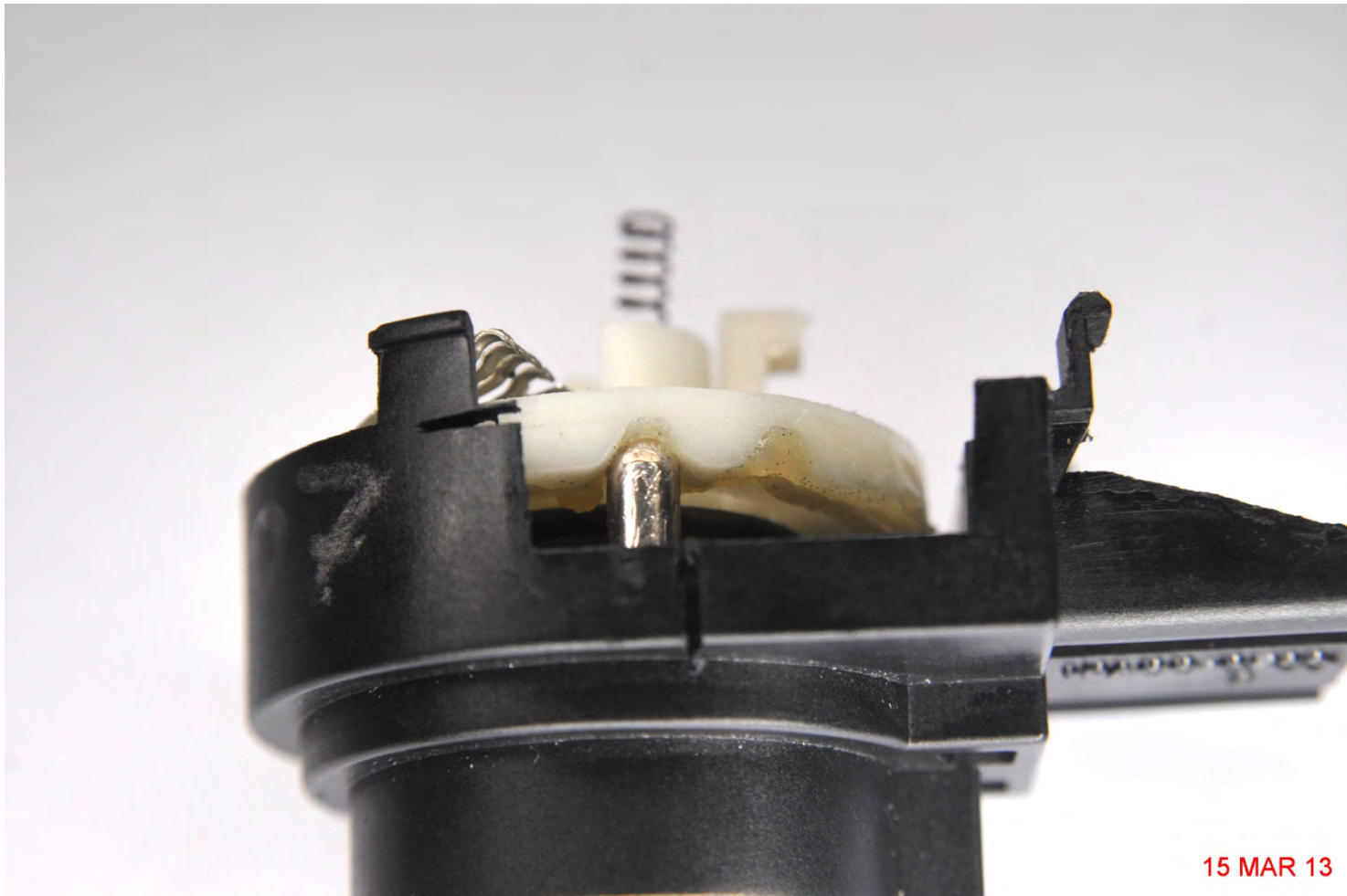


# McSWAIN ENGINEERING, INC.

PROJECT:

General Motors Ignition Switch

Subject-Type Chevrolet Cobalt Ignition Switch



15 MAR 13

DP-E095

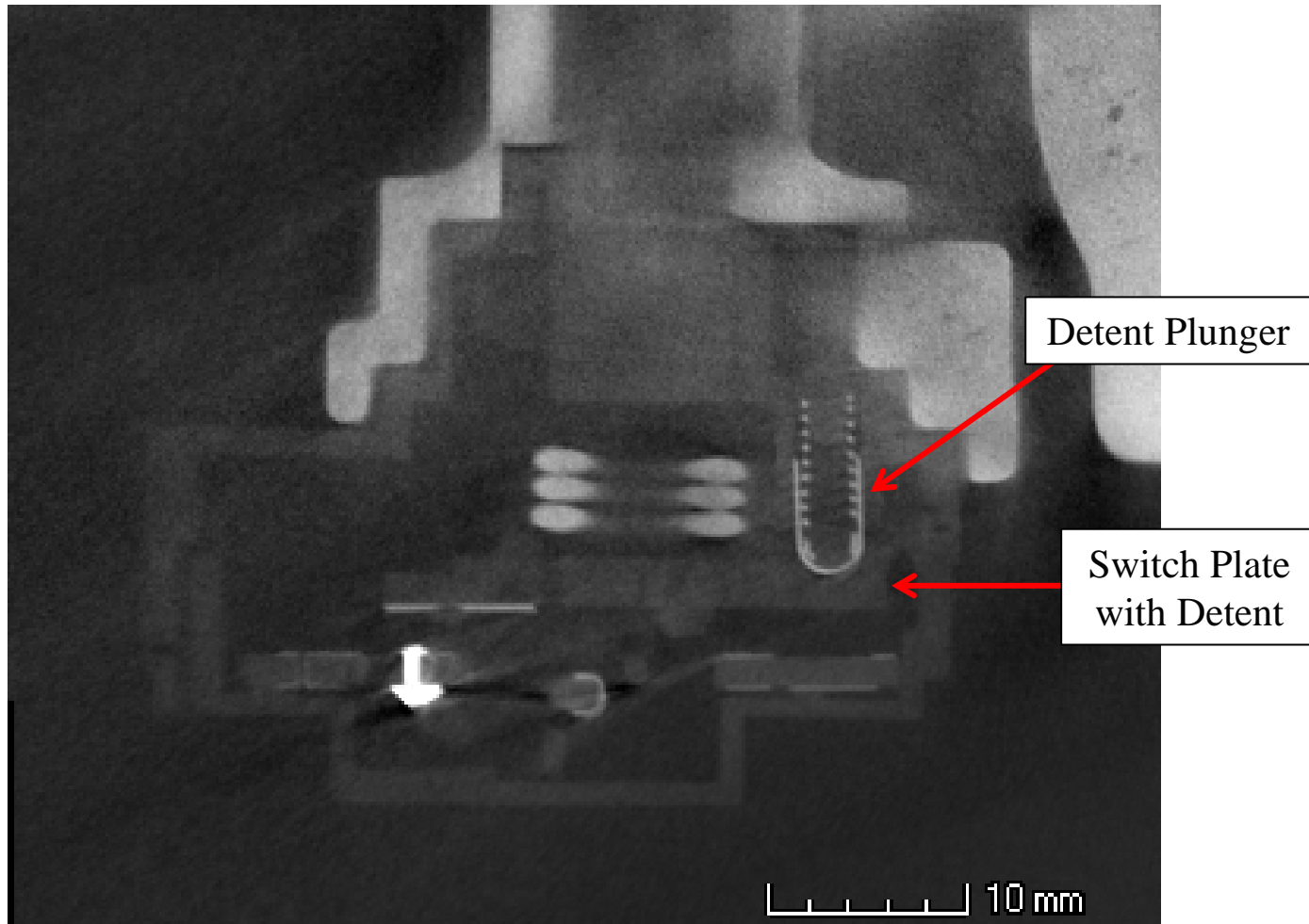


# McSWAIN ENGINEERING, INC.

PROJECT:

General Motors Ignition Switch

2005 Chevrolet Cobalt Ignition Switch CT Scan Image



GM Igniton Switch\_Front - 0386\_Enlarged

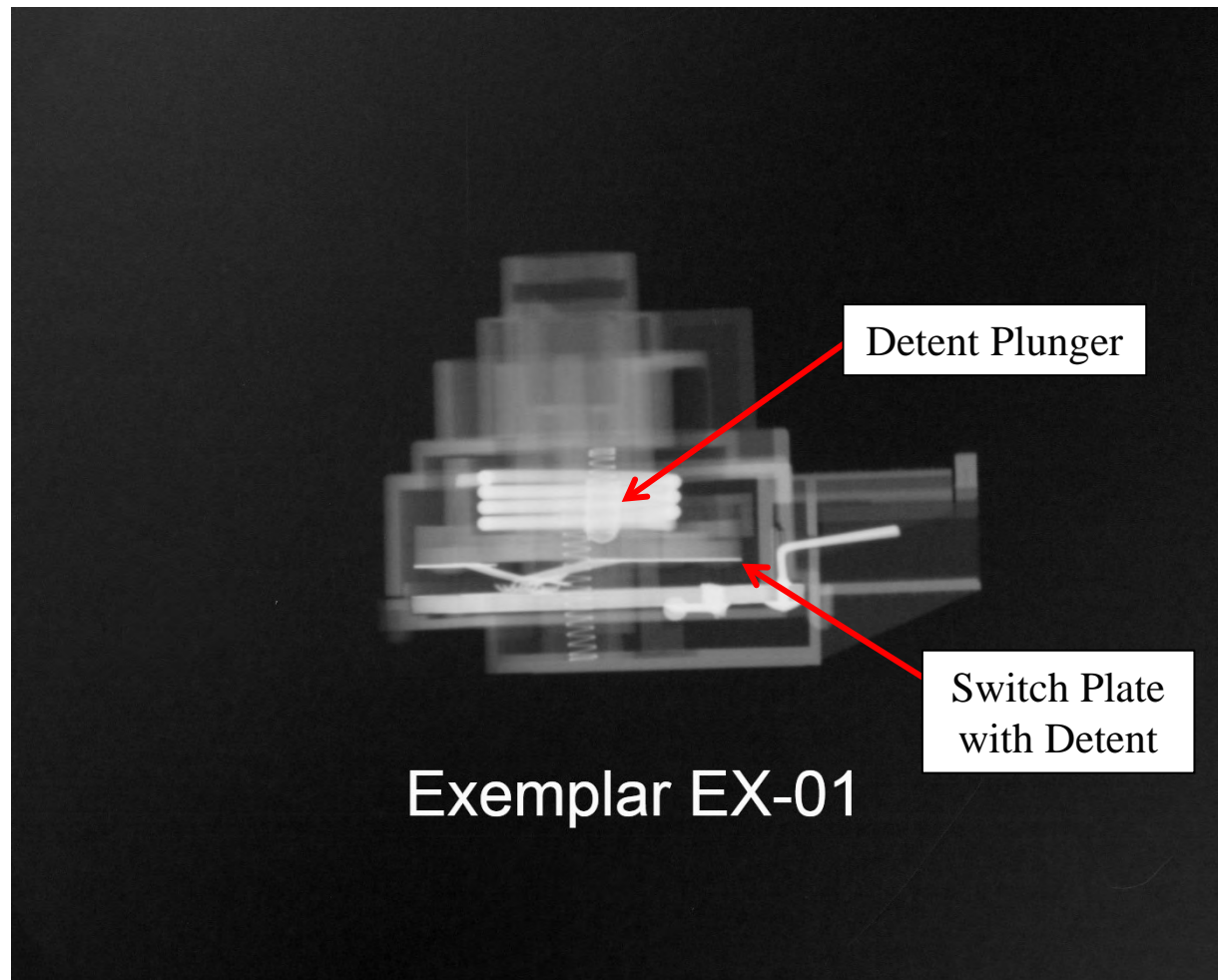


# McSWAIN ENGINEERING, INC.

PROJECT:

General Motors Ignition Switch

2005 Chevrolet Cobalt Ignition Switch Radiograph





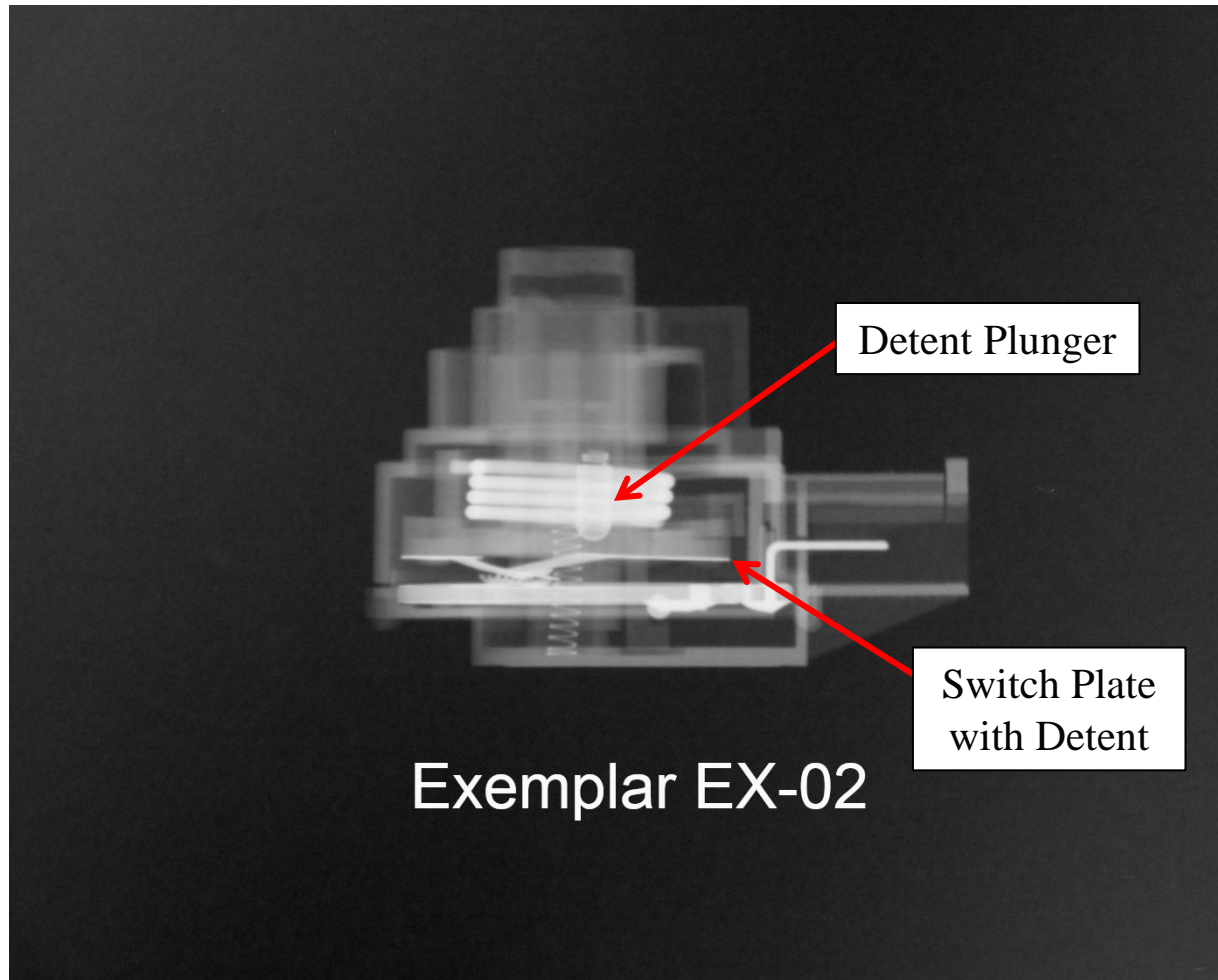


# McSWAIN ENGINEERING, INC.

PROJECT:

General Motors Ignition Switch

New Replacement Chevrolet Cobalt Ignition Switch Radiograph



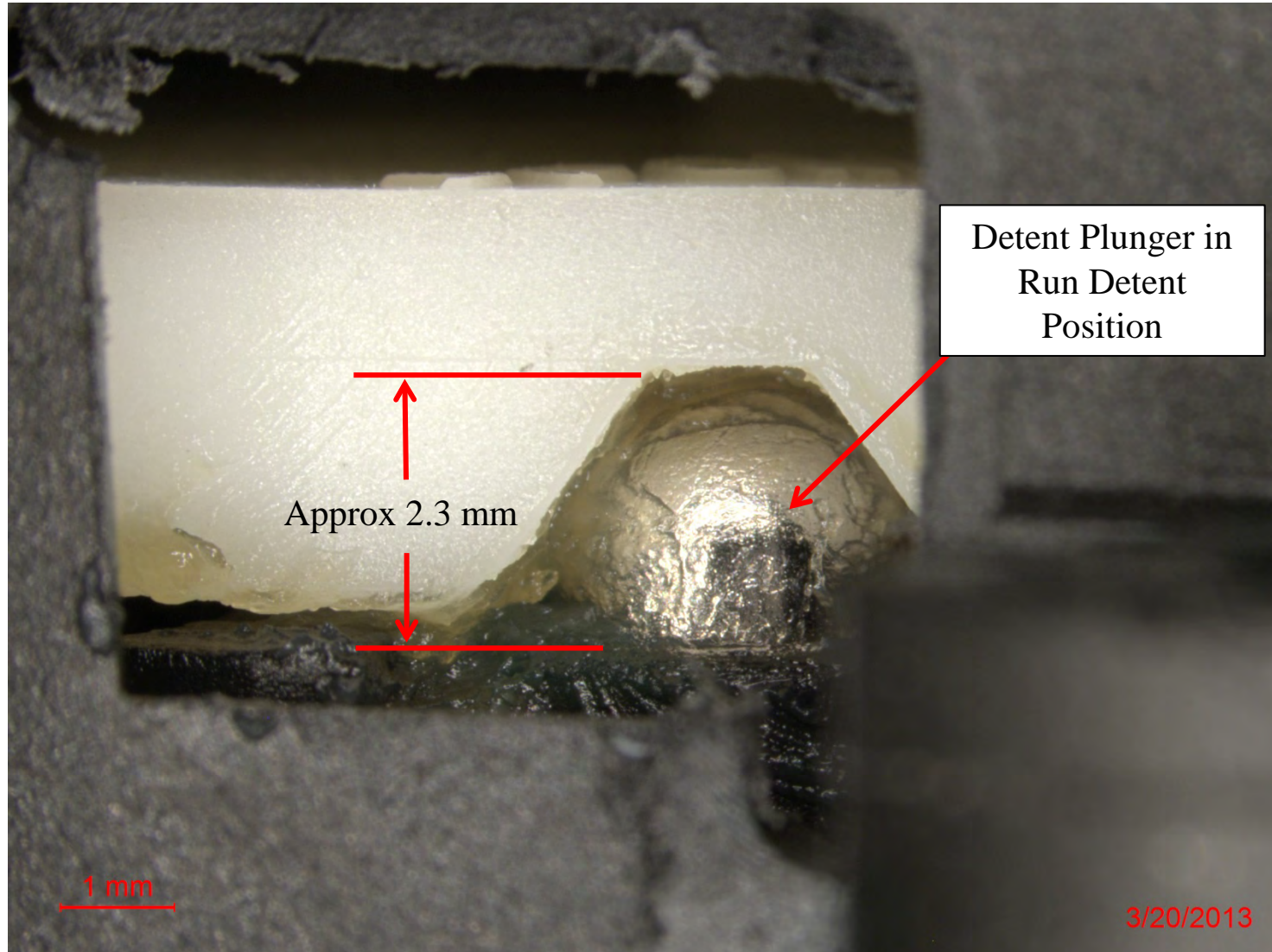


# McSWAIN ENGINEERING, INC.

PROJECT:

General Motors Ignition Switch

2005 Chevrolet Cobalt Ignition Switch



3/20/2013

MDP\_B-043

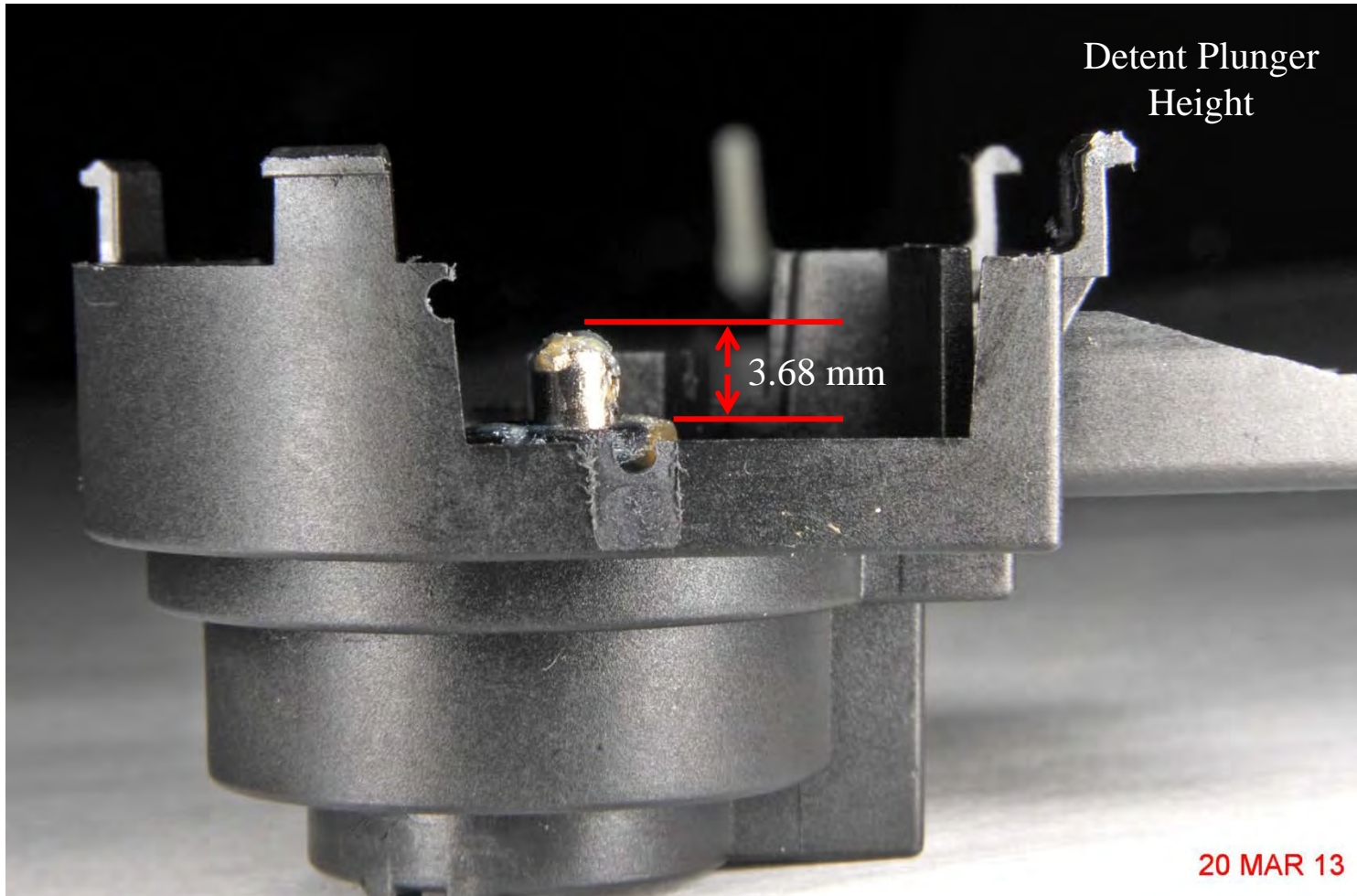


# McSWAIN ENGINEERING, INC.

PROJECT:

General Motors Ignition Switch

2005 Chevrolet Cobalt Ignition Switch



20 MAR 13

DP-0649

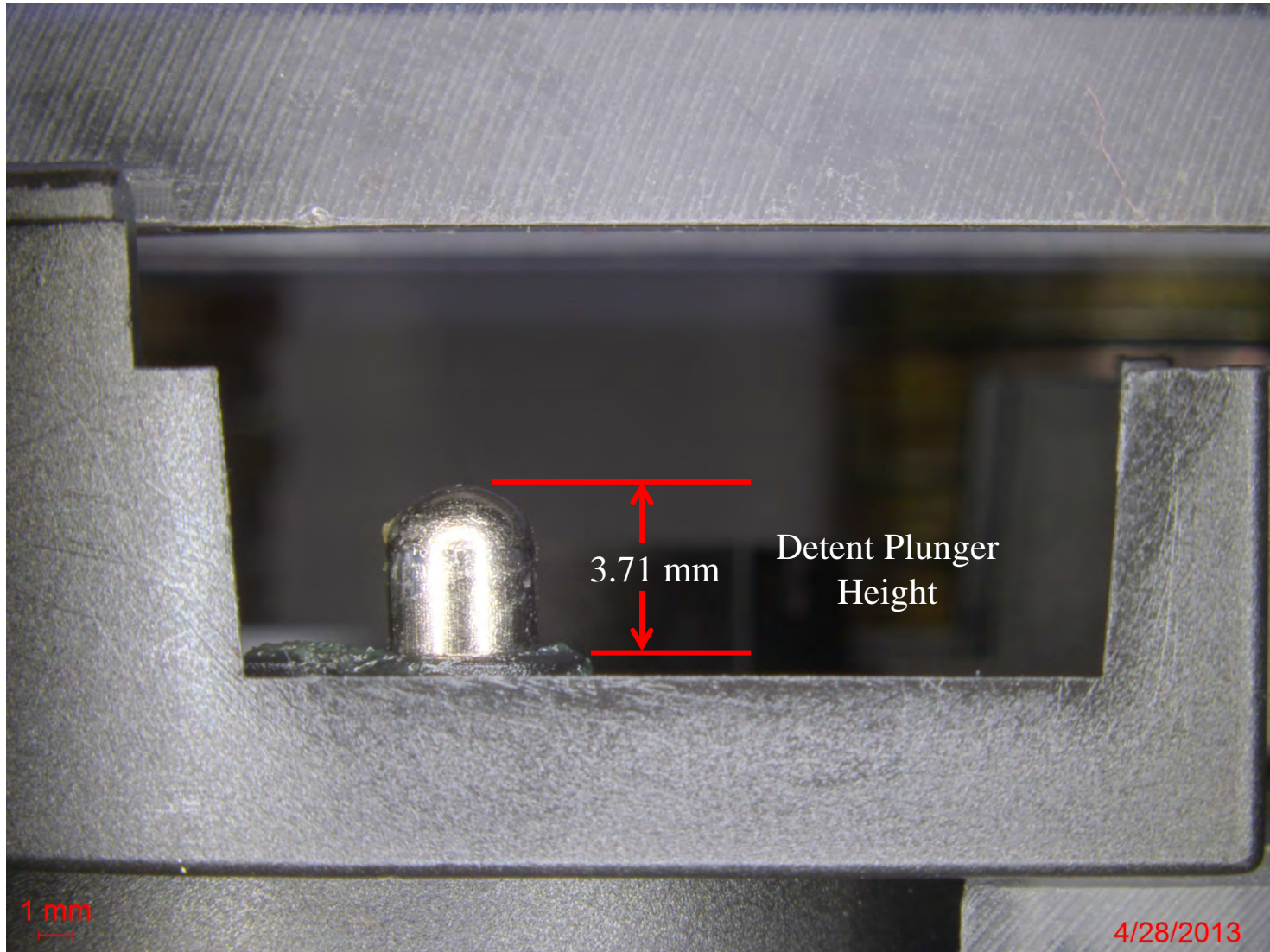


# McSWAIN ENGINEERING, INC.

PROJECT:

General Motors Ignition Switch

2006 Chevrolet Cobalt Ignition Switch



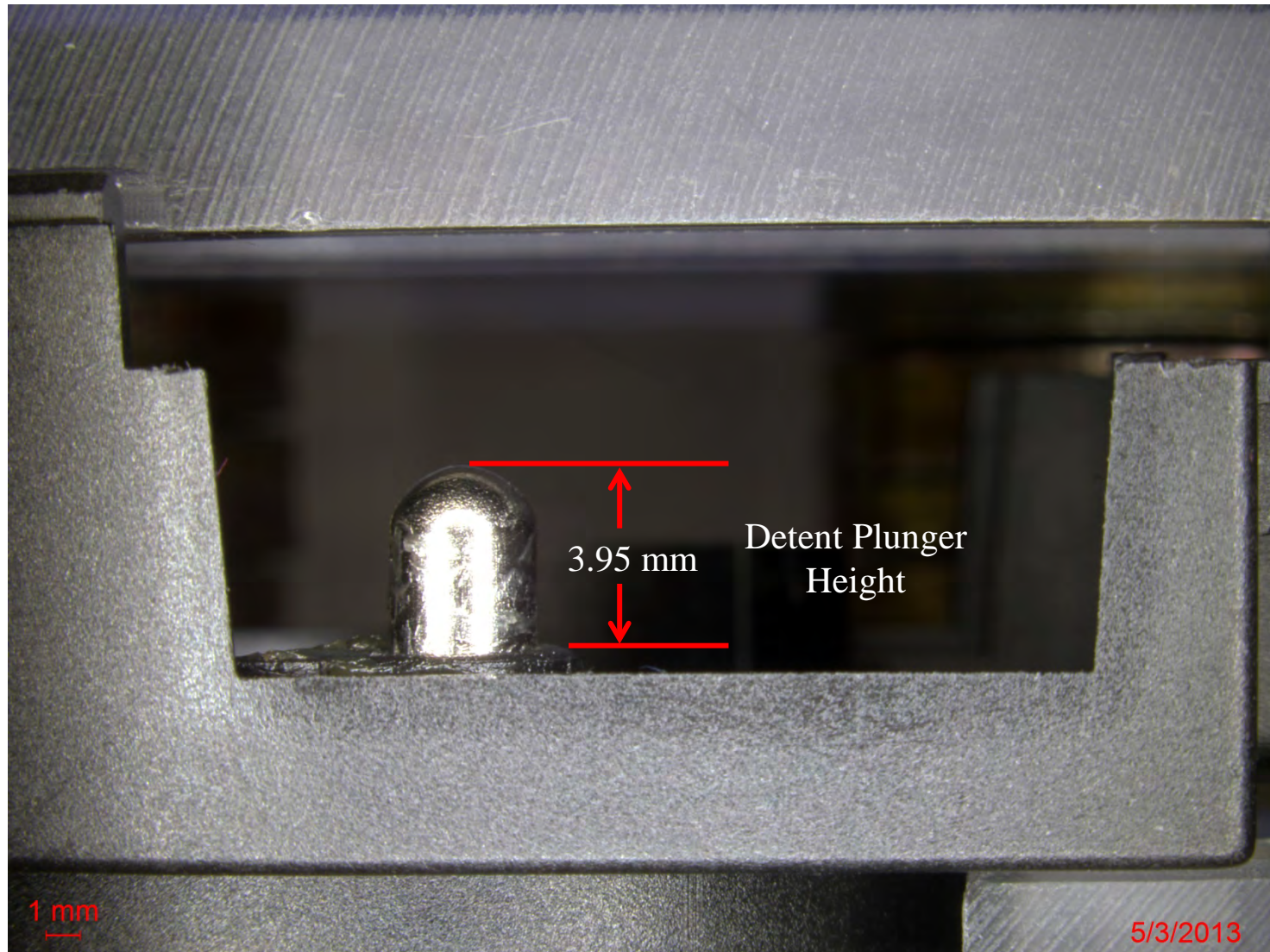


# McSWAIN ENGINEERING, INC.

PROJECT:

General Motors Ignition Switch

2007 Chevrolet Cobalt Ignition Switch (August 2006 Build Date)



5/3/2013

MDP\_A-E004

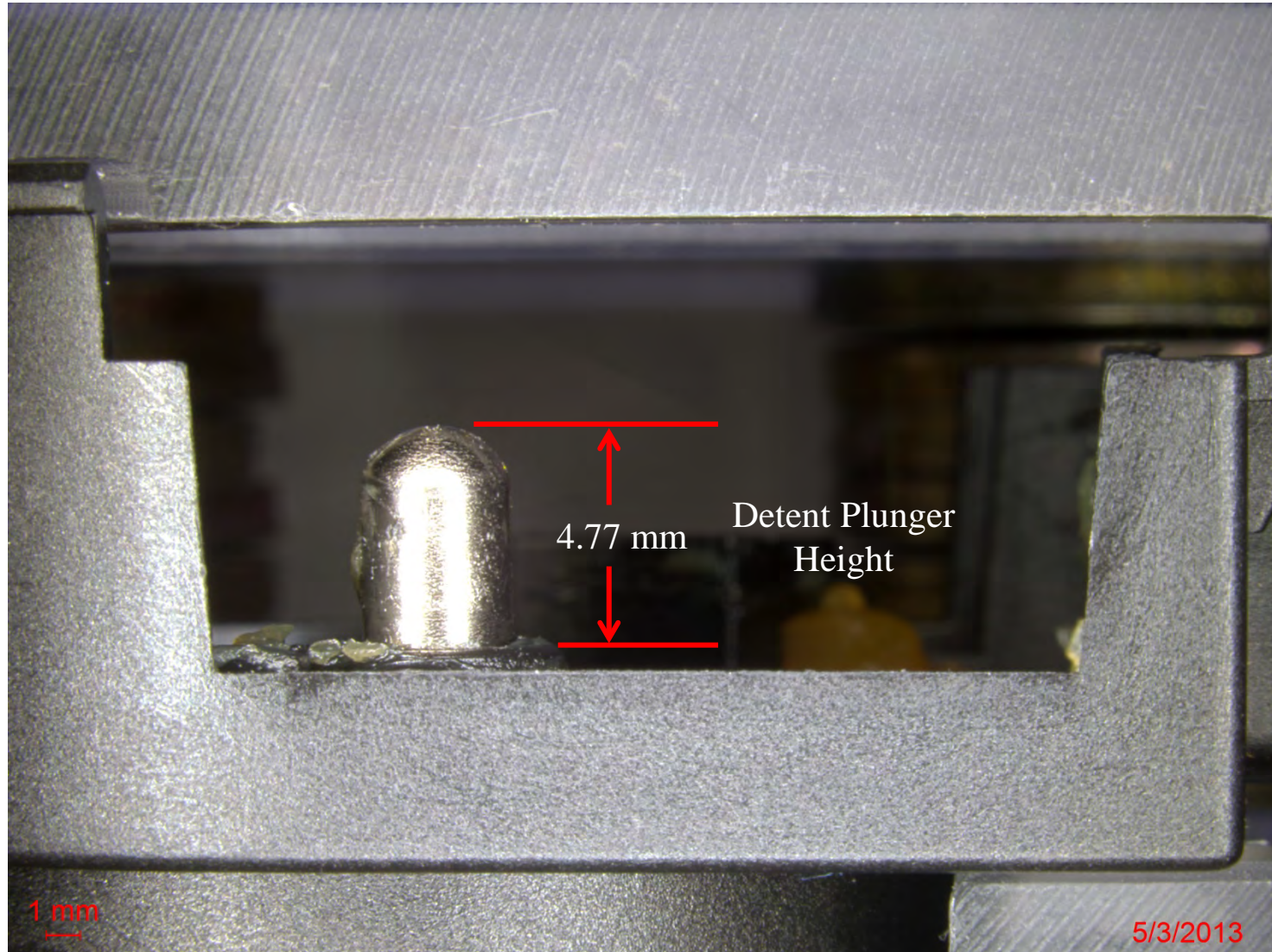


# McSWAIN ENGINEERING, INC.

PROJECT:

General Motors Ignition Switch

2007 Chevrolet Cobalt Ignition Switch (March 2007 Build Date)



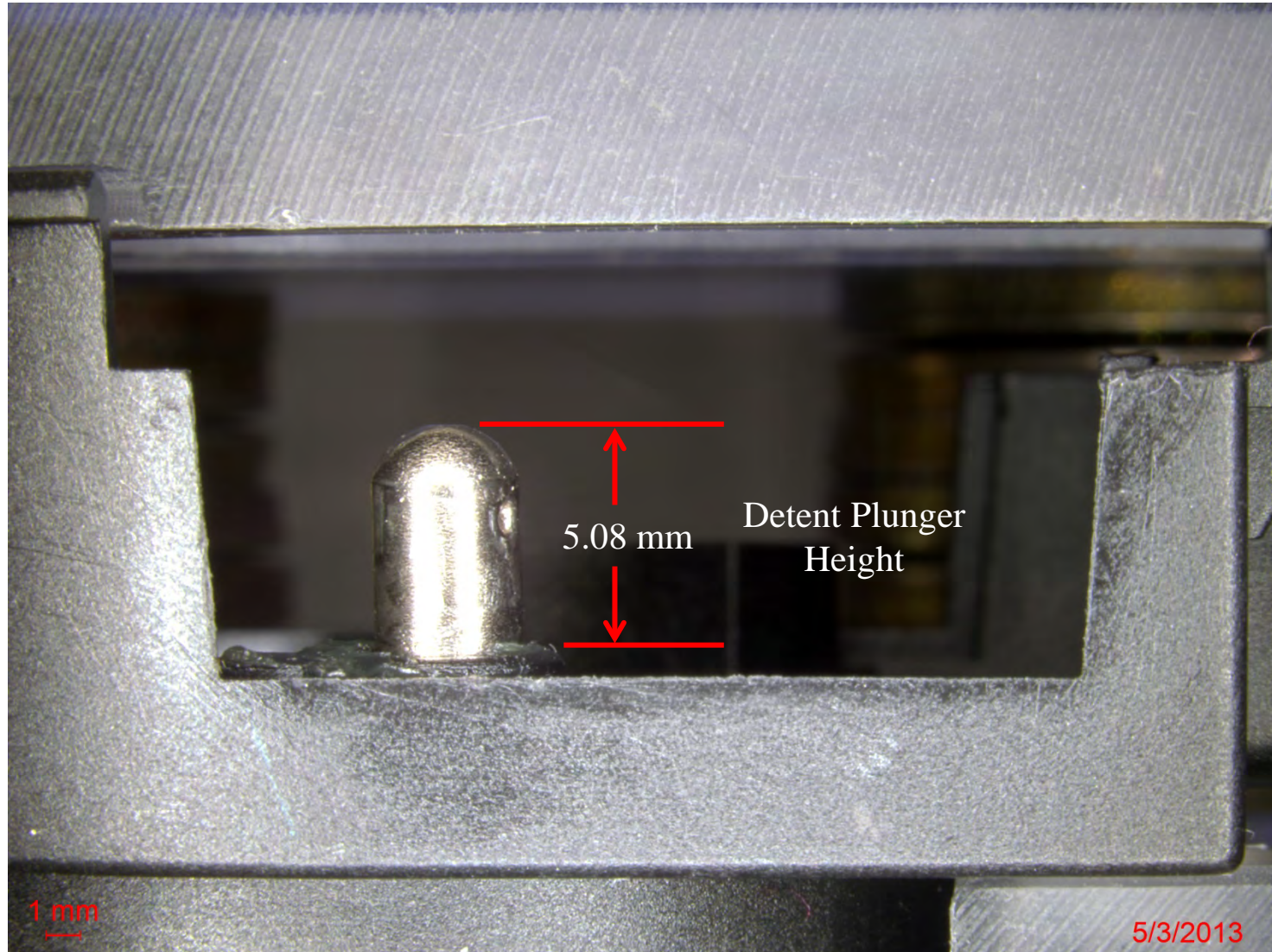


# McSWAIN ENGINEERING, INC.

PROJECT:

General Motors Ignition Switch

2008 Chevrolet Cobalt Ignition Switch



5/3/2013

MDP\_A-E010

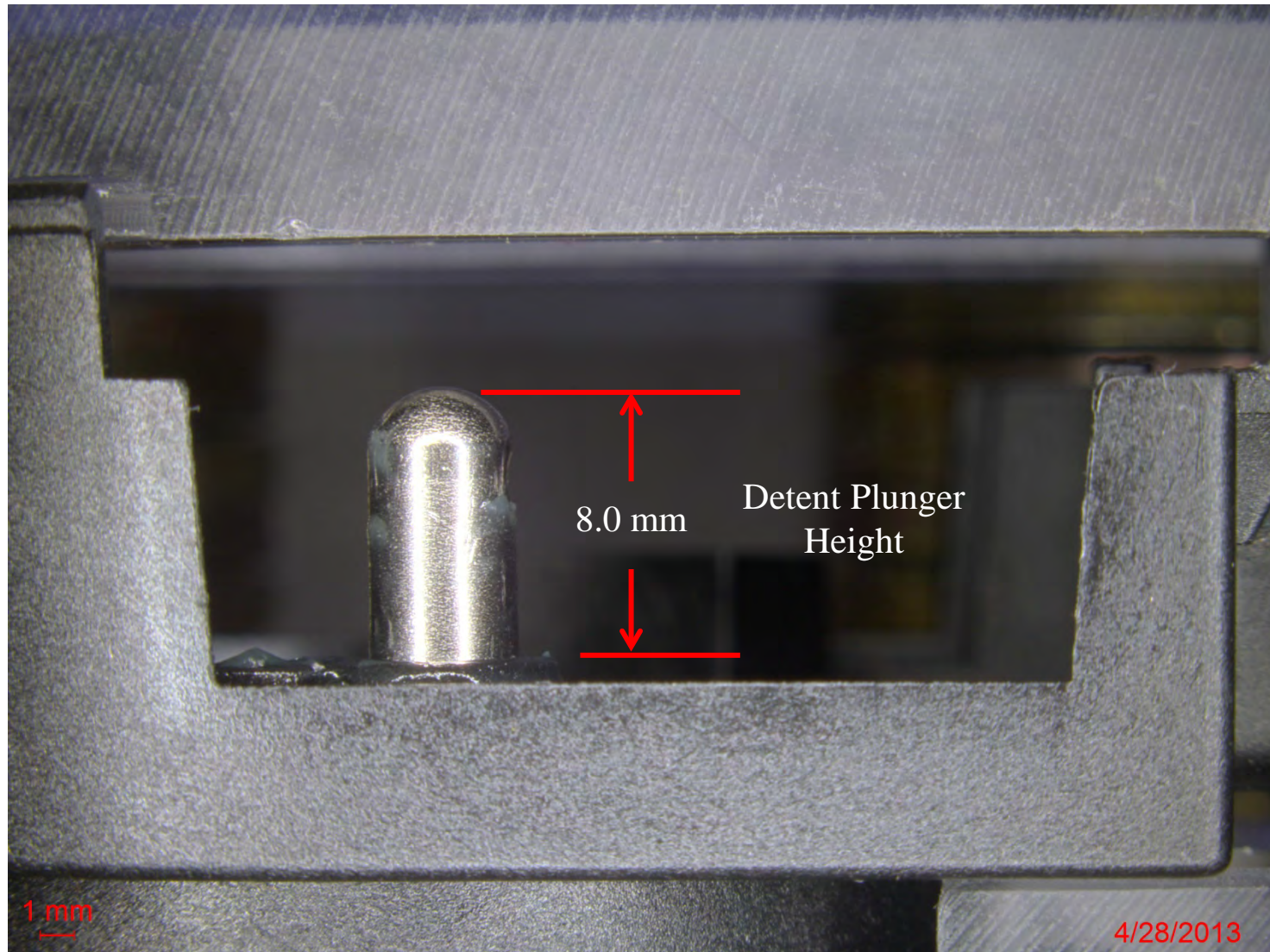


# McSWAIN ENGINEERING, INC.

PROJECT:

General Motors Ignition Switch

New Chevrolet Cobalt Ignition Switch Service Replacement Part



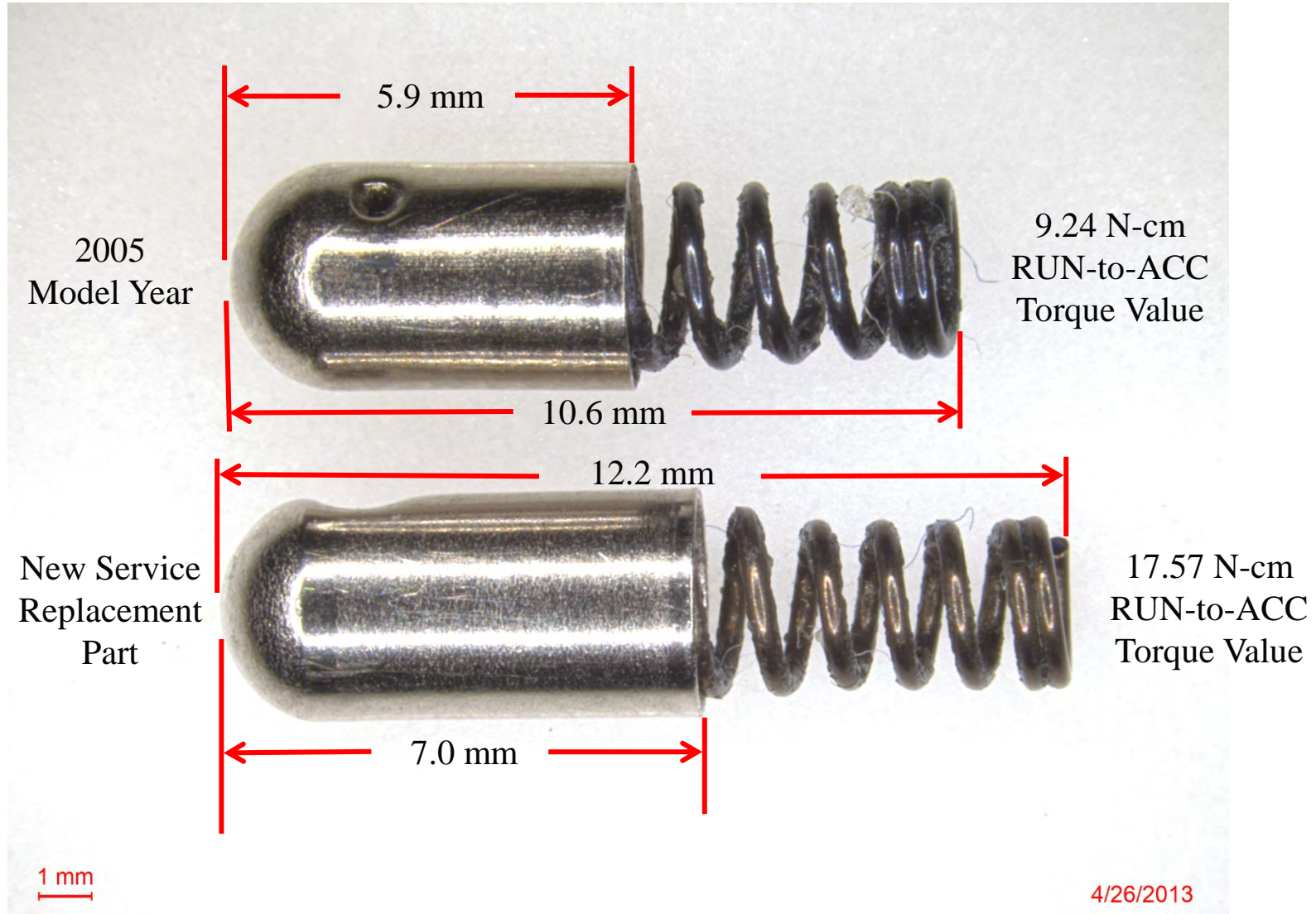




# McSWAIN ENGINEERING, INC.

PROJECT: General Motors Ignition Switch

## Exemplar Chevrolet Cobalt Switch Detent Plungers



4/26/2013

MDP\_A-E001

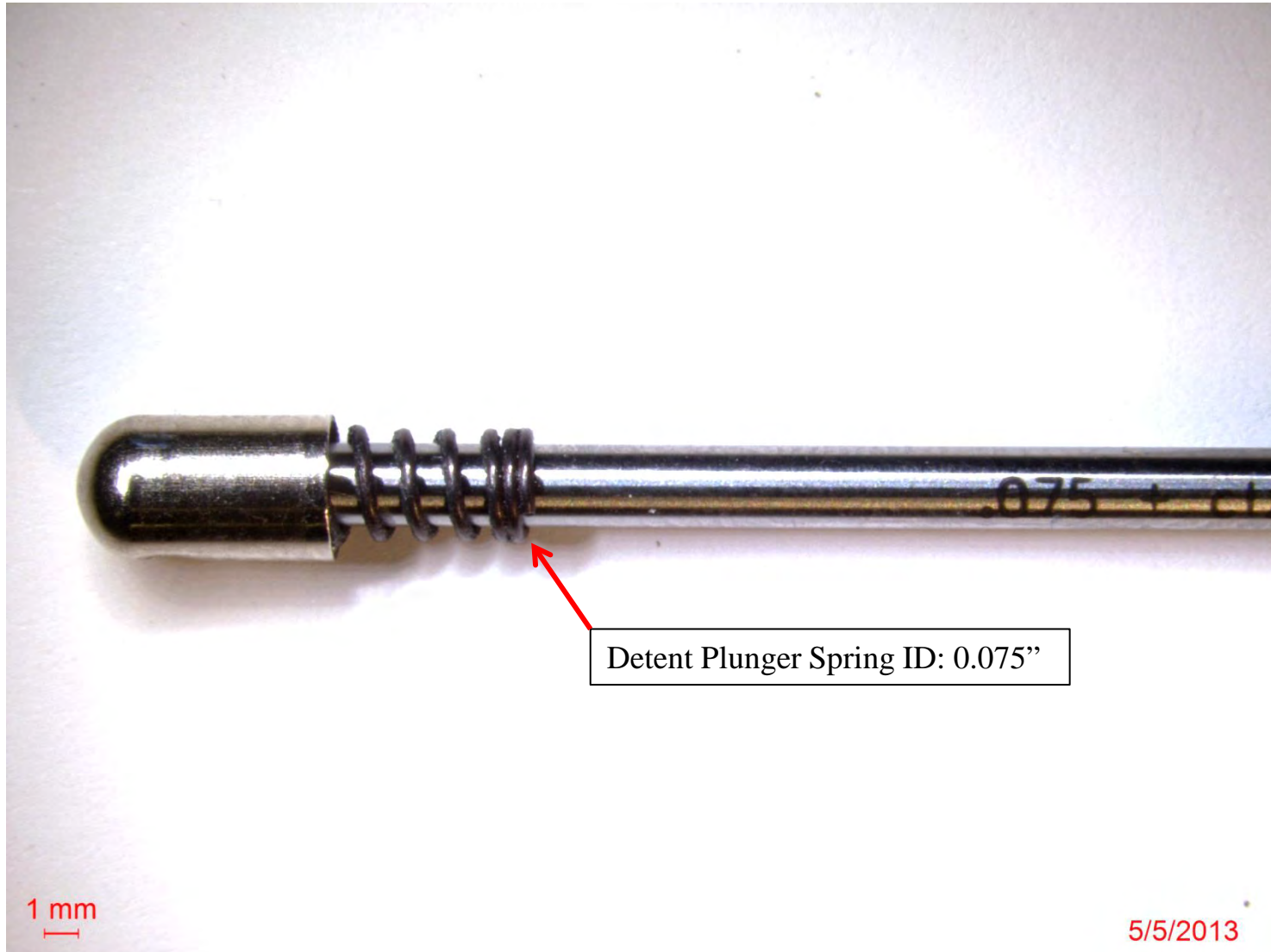


# McSWAIN ENGINEERING, INC.

PROJECT:

General Motors Ignition Switch

2006 Chevrolet Cobalt Ignition Switch Detent Plunger



1 mm  
—

5/5/2013

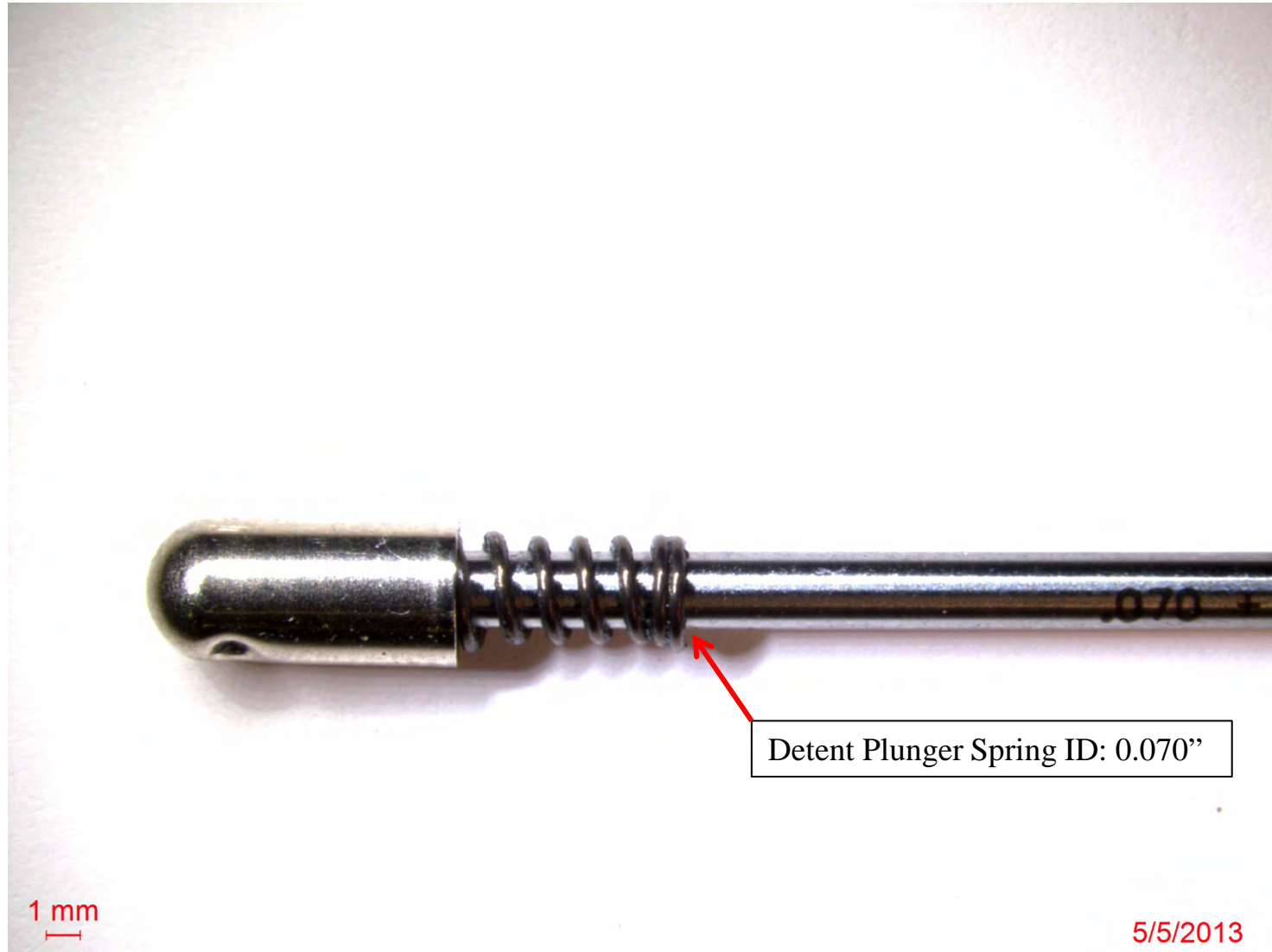
MDP\_A-E013



# McSWAIN ENGINEERING, INC.

PROJECT: General Motors Ignition Switch

New Replacement Chevrolet Cobalt Ignition Switch Detent Plunger



1 mm

5/5/2013

MDP\_A-E015