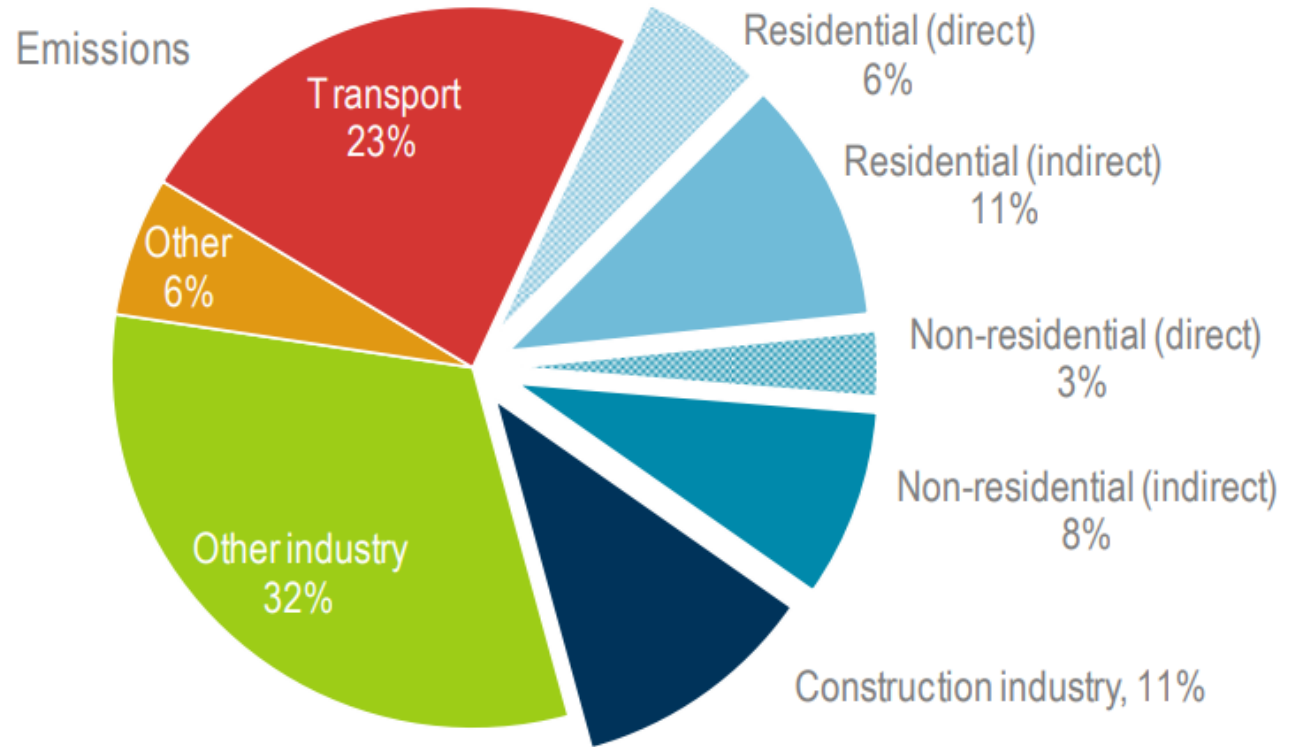
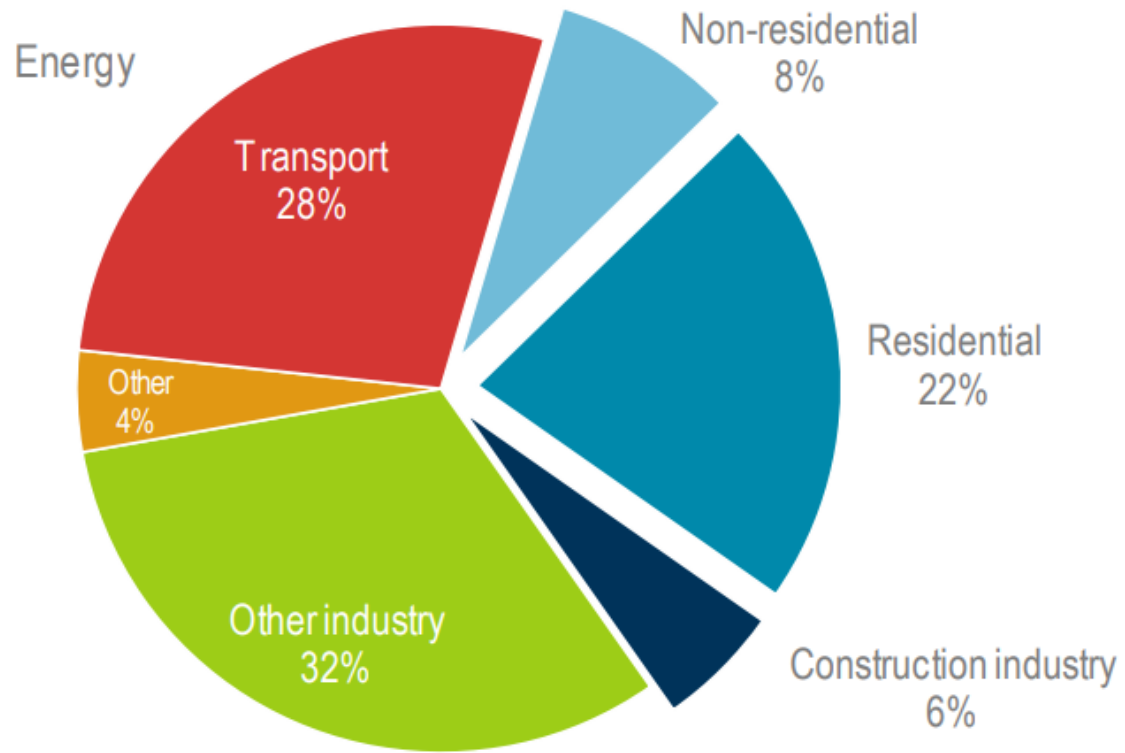


# Global share of buildings and construction final energy and emissions, 2017



Note: *Construction industry* is an estimate of the portion of the overall industry sector that applies to the manufacture of materials for buildings construction, such as steel, cement and glass.

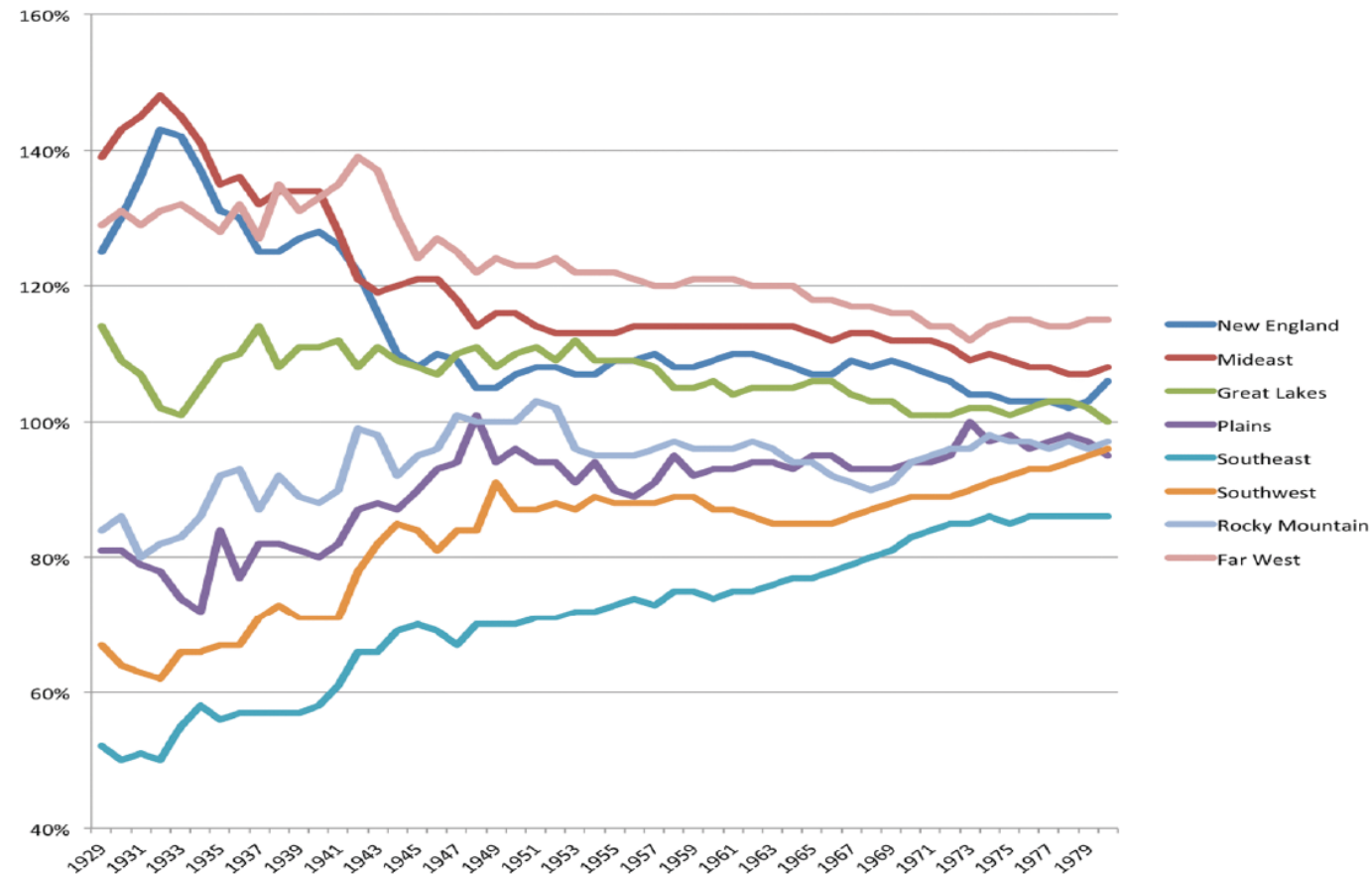
Sources: Derived from IEA (2018a), *World Energy Statistics and Balances 2018*, [www.iea.org/statistics](http://www.iea.org/statistics) and IEA *Energy Technology Perspectives* buildings model, [www.iea.org/buildings](http://www.iea.org/buildings).



# DC Water's Energy Future

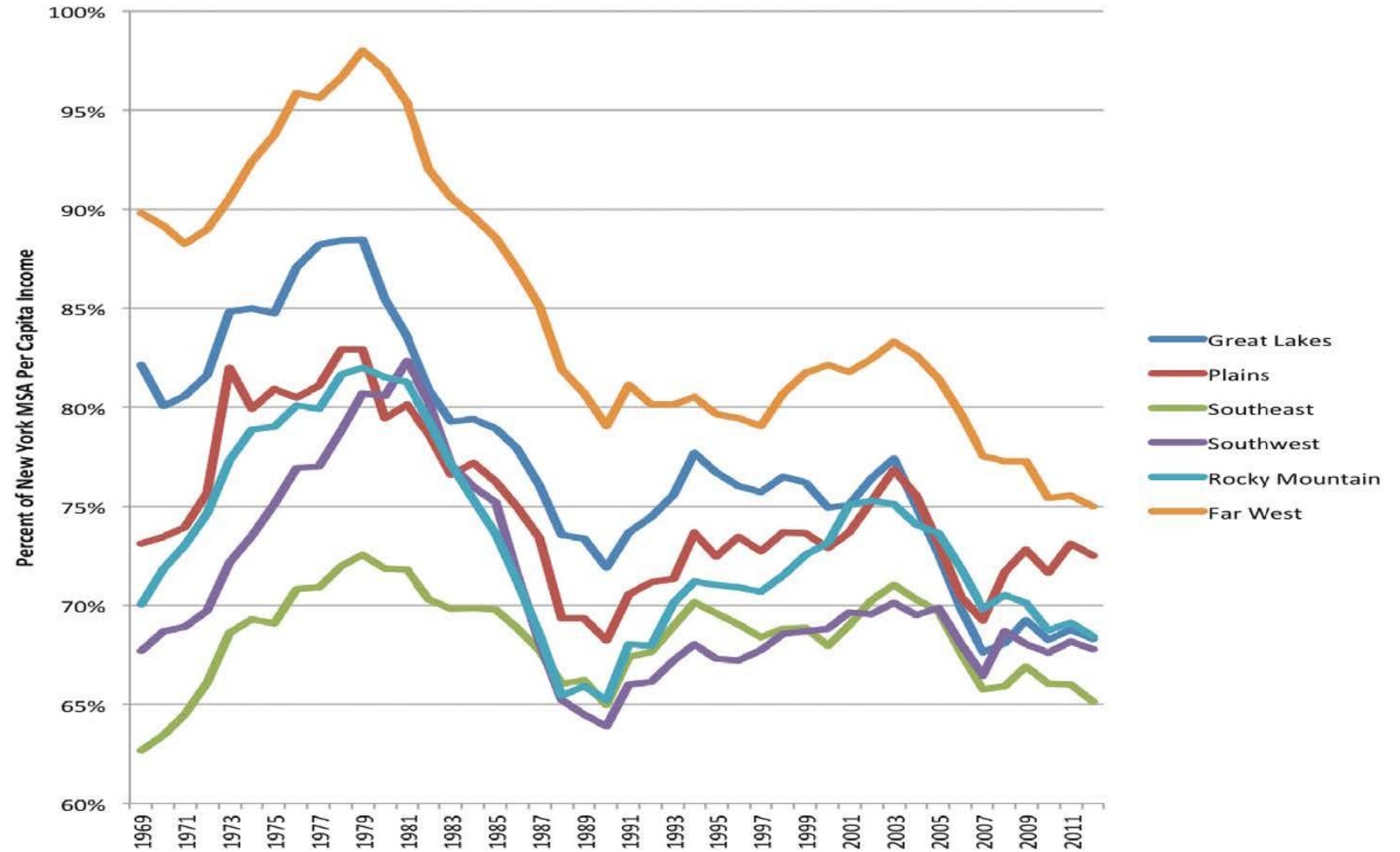


# The Emergence of a Single American Standard of Living: Regional Per Capita Income as a Percentage of National Average

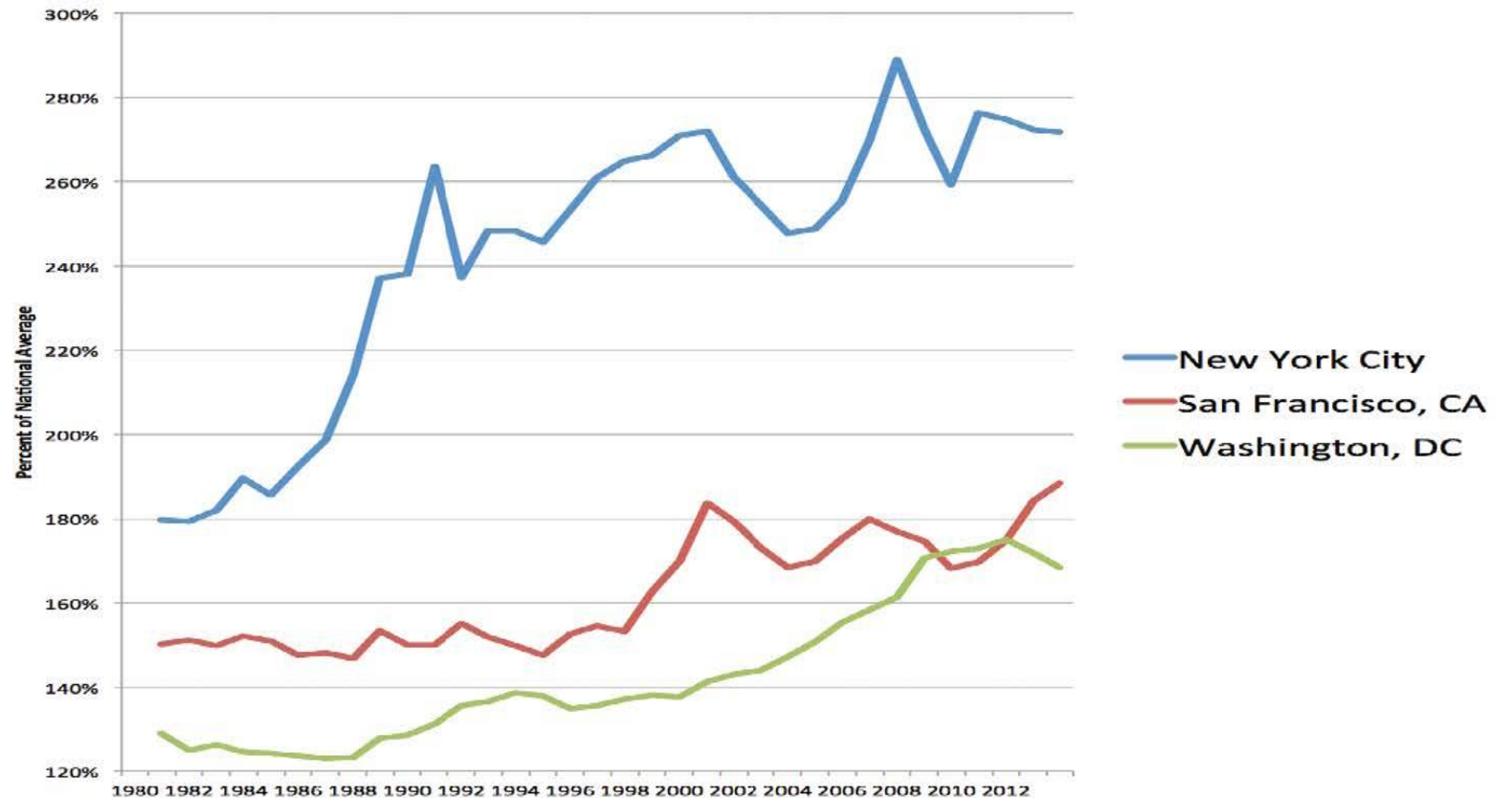




# Per Capita Personal Income of Selected Regions Compared to the New York Metropolitan Area



# Rise in the Per Capita Income of Selected Cities Compared to the Per Capita Income of Americans





# Distressed Community Index

## 5 TIERS OF COMMUNITIES

Prosperous

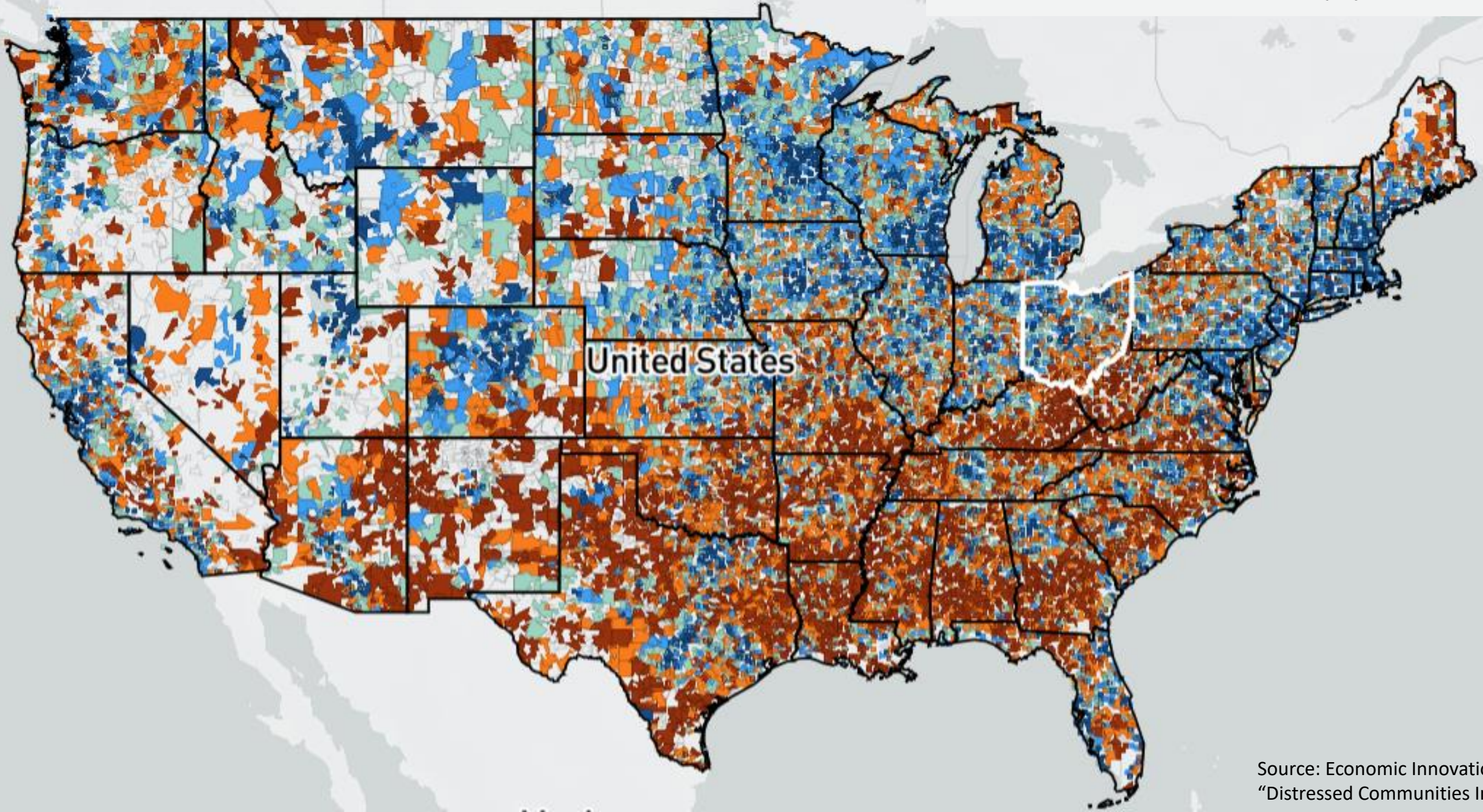
Comfortable

Mid-tier

At Risk

Distressed

\* DCI not calculated for areas with fewer than 500 people



Source: Economic Innovation Group,  
"Distressed Communities Index"