

1938 Santa Ana River Flood

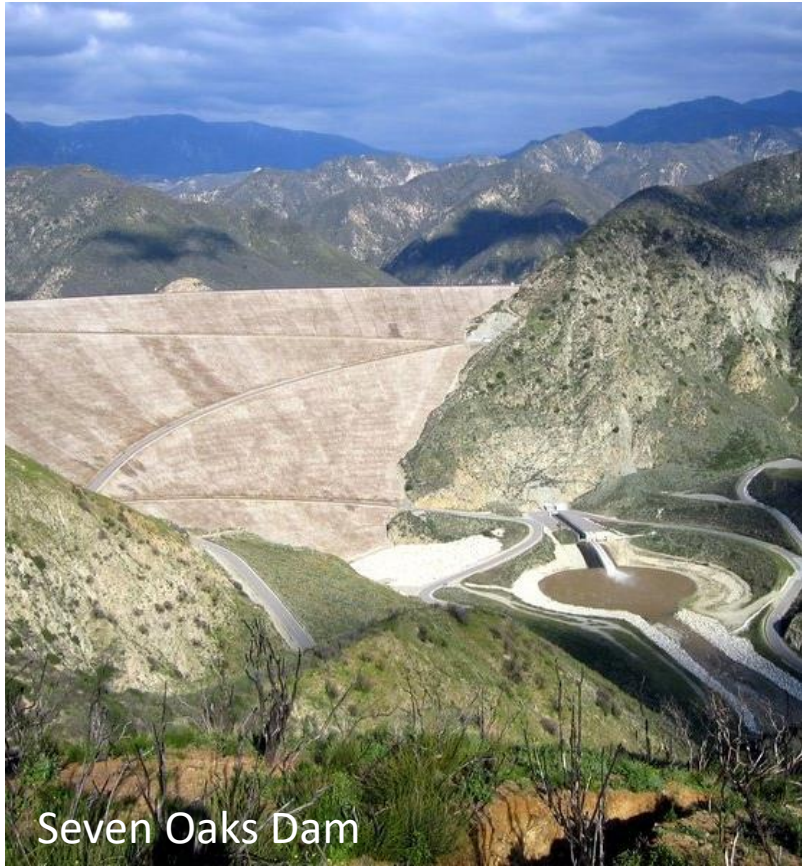
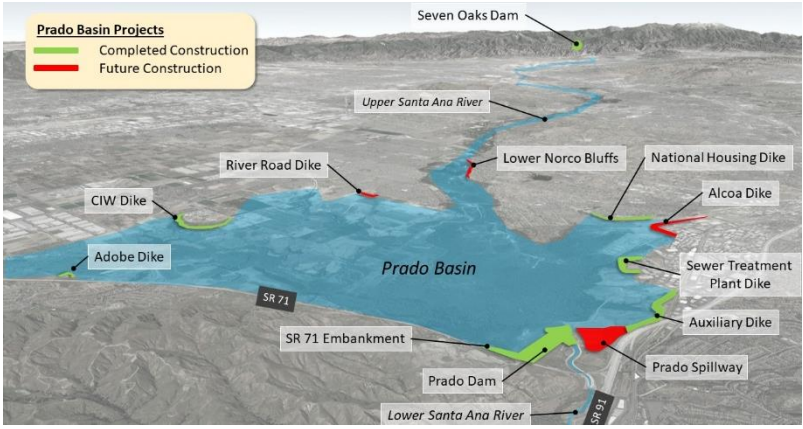


1969 Santa Ana River Flood



Jason Uhley
General Manager – Chief Engineer

Innovation and Investment in Water Resources Infrastructure
Sub-Committee on Energy and Water Development
March 10, 2021



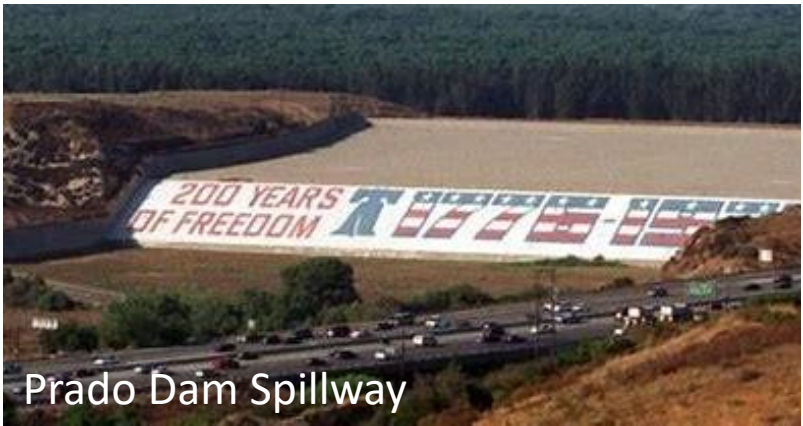
Seven Oaks Dam



Prado Dam



BNSF Bridge



Prado Dam Spillway

Santa Ana River Mainstem Project

POLITICS

Trump says California eligible for FEMA aid in Valentine's Day storm. 11 counties to get help

Sam Metz Palm Springs Desert Sun

Published 2:47 p.m. PT May 2, 2019 | Updated 3:53 p.m. PT May 2, 2019



NEWS > LOCAL NEWS



Scripps study says California will get more rain from atmospheric rivers

Heavy rains, more droughts likely through 2100

1993

Los Angeles Times

Marines Hit Harder by Floodwaters Than by Hussein : Weather: General makes assessment after tour of Camp Pendleton damage, which affected 70 aircraft, electronic equipment and a chapel built in 1810.

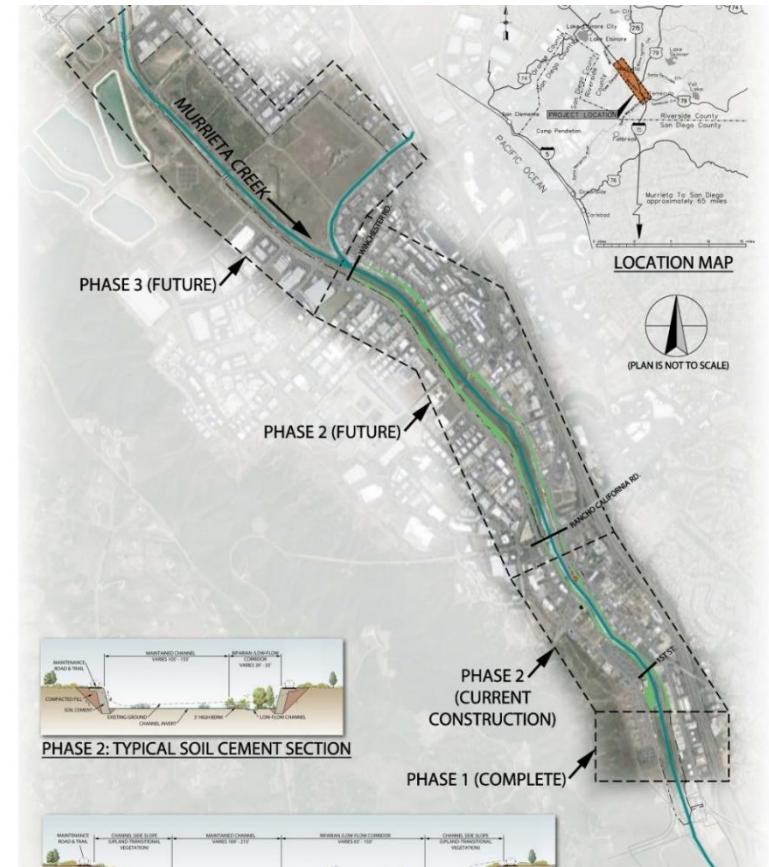
By TONY FERRY
JAN. 23, 1993 12 AM PT
TIMES STAFF WRITER



2017



Future



Wildlife of Murrieta Creek

Endemic
This area is home to many endemic species of Murrieta Creek. These fish are found only in the San Diego County area and are not found elsewhere. They are found in the San Diego County area and are not found elsewhere. They are found in the San Diego County area and are not found elsewhere.

History
The area is home to many endemic species of Murrieta Creek. These fish are found only in the San Diego County area and are not found elsewhere. They are found in the San Diego County area and are not found elsewhere.

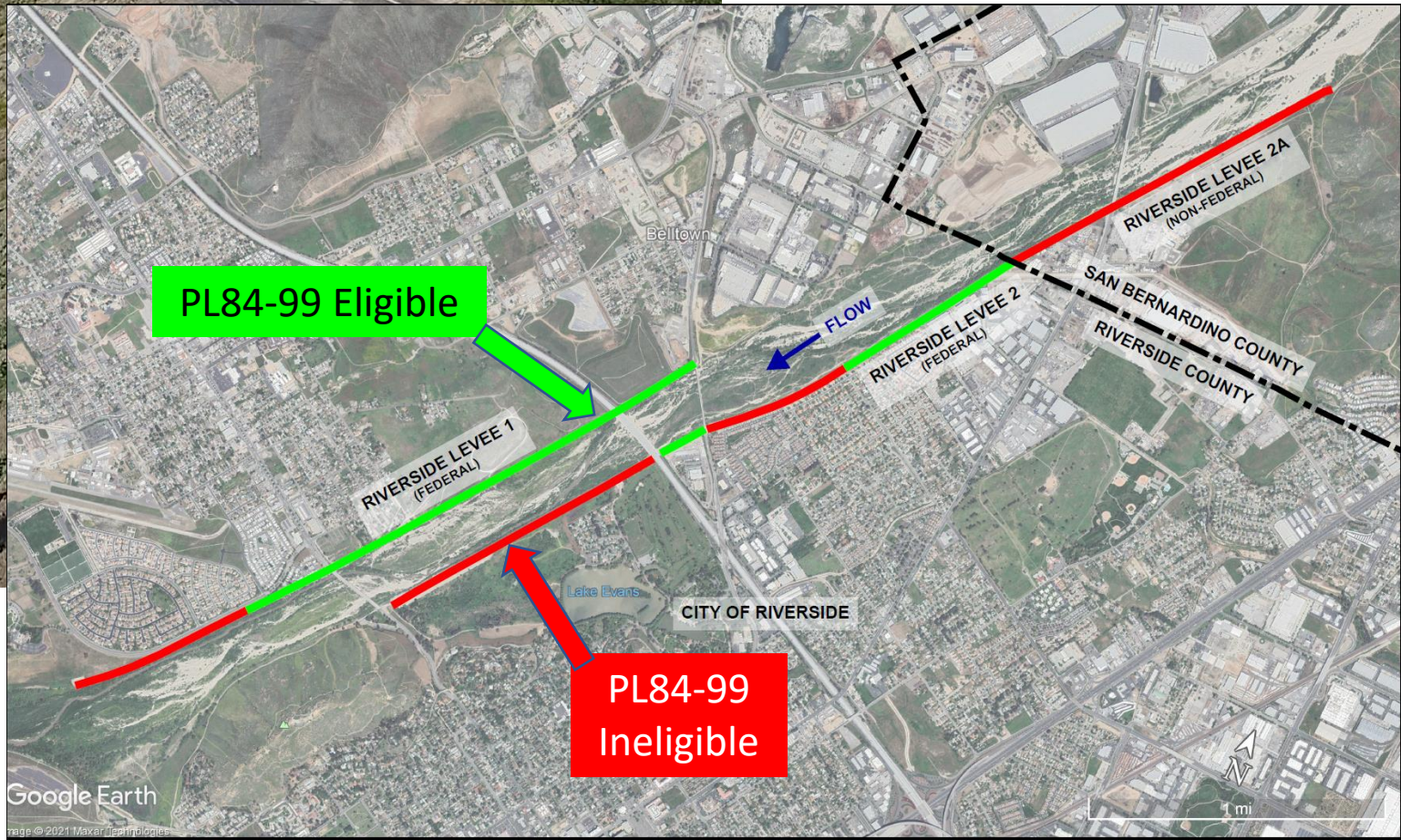
Murrieta Creek Trail

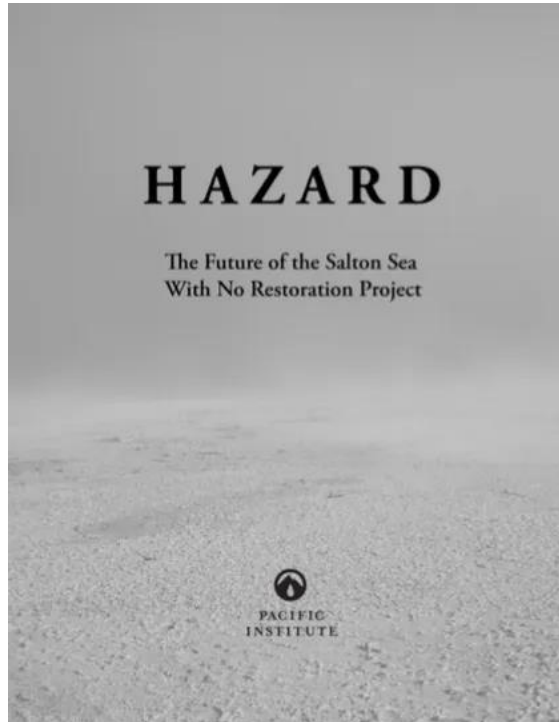


Murrieta Creek Flood Control, Environmental Restoration and Recreation Project

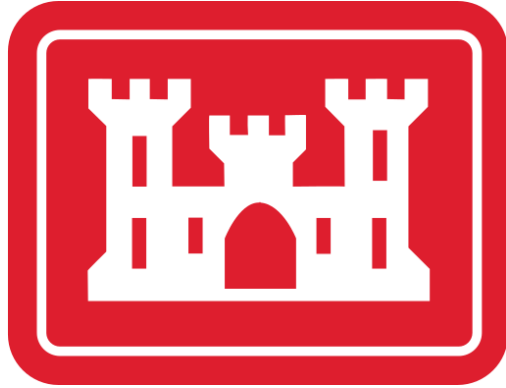


Santa Ana River Levee Restoration Project





Investment in Flood Risk Management Projects Has Never Been More Important



- Many shovel-ready projects awaiting support
- Opportunity to promote resiliency and innovation
- Opportunity to leverage capable local sponsors